

**PANS-OPS  
INSTRUMENT DEPARTURE CHART**

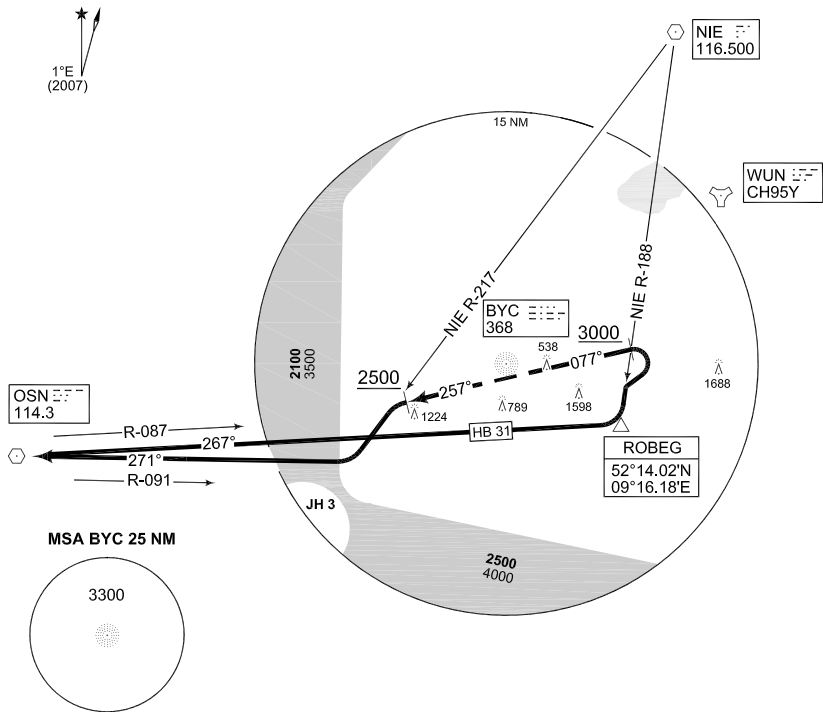
AD ELEV 230

**HB 11 - 31  
BUECKEBURG (ETHB)**

BUECKEBURG TWR 341.250 140.400		BUECKEBURG RADAR 389.450 124.500 123.300			BREMEN RADAR 259.725 131.325			
	RWY	from - to	60	120	180	240	300	Reason
	08	DER - 3000	400	800	1200	—	—	ATC
	26	DER - 2500	380	760	1140	—	—	ATC

**NOTE:**

PROCEDURE NOT AUTHORIZED FOR  
ACFT CAT C,D,E



**EMERG SAFE ALT 100 NM 6100**

**TA 5000**

HB 11 (RWY 26)	<ul style="list-style-type: none"> <li>- Climb on track 257° altitude 2500 ft or above</li> <li>- Turn left to intercept NIE R-217</li> <li>- Turn right to intercept OSN R-091 inbound</li> <li>- Proceed to OSN</li> </ul> <p>INITIAL CLIMB: 4000 FT</p>
HB 31 (RWY 08)	<p>Speed restriction: MAX KIAS 150 Altitude restriction: cross NIE R-188 altitude 3000 ft or above</p> <ul style="list-style-type: none"> <li>- Climb on track 077° altitude 3000 ft or above</li> <li>- when crossing NIE R-188 turn right to intercept NIE R-188</li> <li>- Turn right to intercept OSN R-087 inbound</li> <li>- Proceed to OSN</li> </ul> <p>INITIAL CLIMB: 4000 FT</p>

CHANGE: NOTE DEPICTION, NLF5 (278/11, 270/11)

AFSBw 12 JAN 2012

**HB 11 - 31**

52°16.71'N  
009°04.93'E

**BUECKEBURG (ETHB)**