

**PANS-OPS  
INSTRUMENT DEPARTURE CHART**

AD ELEV 230

**HB 12 - 32  
BUECKEBURG (ETHB)**

BUECKEBURG TWR 341.250 140.400	BUECKEBURG RADAR 389.450 124.500 123.300	BREMEN RADAR 259.725 131.325							
		RWY	From - to	60	120	180	240	300	Reason
		08	DER - 4000	400	800	1200	—	—	ATC
		26	DER - 2500	380	760	1140	—	—	ATC

**NOTE:**  
PROCEDURE NOT  
AUTHORIZED FOR  
ACFT CAT C,D,E

BMN CH121Y  
(117.450)

BASUM  
52°46'19"N  
008°47'19"E

1°E  
(2007)

DP 325

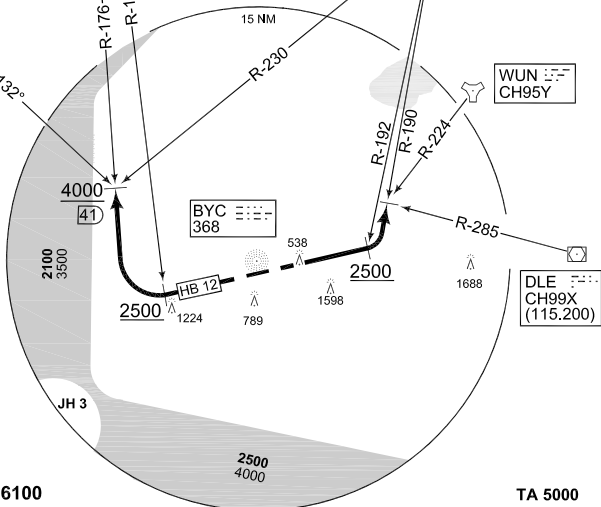
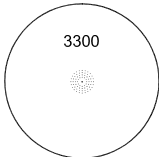
NIE 116.5

WUN CH95Y

BYC 368

DLE CH99X  
(115.200)

MSA BYC 25 NM



**EMERG SAFE ALT 100 NM 6100**

**TA 5000**

HB 12 (RWY 26)	<ul style="list-style-type: none"> <li>- Climb on track 257° altitude 2500 ft or above</li> <li>- When crossing BMN R-173 turn right to intercept BMN R-176 inbound</li> <li>- Cross BMN R-176/41 DME altitude 4000 ft or above</li> <li>- Continue as cleared by ATC</li> </ul> <p>INITIAL CLIMB: 4000 ft</p>
HB 32 (RWY 08)	<p>Speed restriction: MAX KIAS 150</p> <p>Altitude restriction: cross NIE R-192 altitude 2500 ft or above</p> <ul style="list-style-type: none"> <li>- Climb on track 077° altitude 2500 ft or above</li> <li>- When crossing NIE R-192 turn left to intercept NIE R-190 inbound</li> <li>- Cross DLE R-285 altitude 4000 ft or above</li> <li>- Continue as cleared by ATC</li> </ul> <p>INITIAL CLIMB: 4000 ft</p>

CHANGE: NOTE DEPICTION, NLF5 (278/11, 270/11)

AFSBw 12 JAN 2012

**HB 12 - 32**

52°16.71'N  
009°04.93'E

**BUECKEBURG (ETHB)**