

**PANS OPS
INSTRUMENT DEPARTURE CHART**

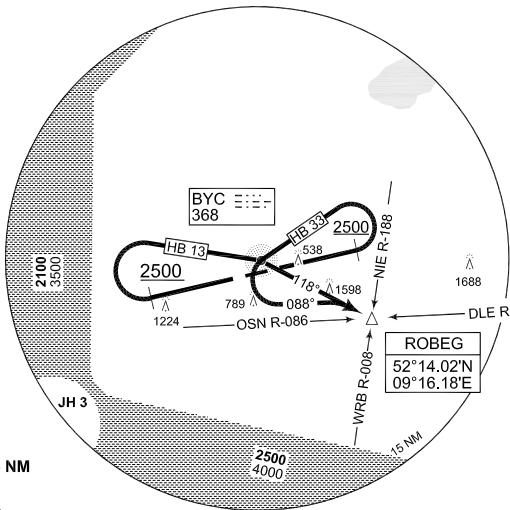
**HB 13 - 33
BÜCKEBURG (ETHB)**

BÜCKEBURG TWR 341.250 140.400		BÜCKEBURG RADAR 389.450 124.500 123.300			BREMEN RADAR 259.725 131.325				
AD ELEV 230		RWY	From - to	60	120	180	240	300	Reason
		08	DER - 2500	400	800	1200	---	---	ATC
		26	DER - 2500	380	760	1140	---	---	ATC

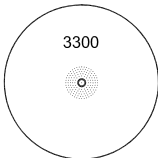
PROCEDURE NOT AUTHORIZED FOR ACFT CAT C,D,E



NIE 116.5



MSA BYC 25 NM



EMERG SAFE ALT 100 NM 6100

TA 5000

HB 13 (RWY 26)	<ul style="list-style-type: none"> - Climb on track 257° altitude 2500 ft or above - Turn right and proceed inbound BYC NDB - When passing BYC NDB, proceed on BYC track 118° to ROBEG <p>INITIAL CLIMB: 5000 ft</p>
HB 33 (RWY 08)	<p>Speed restriction: MAX KIAS 150</p> <ul style="list-style-type: none"> - Climb on track 077° altitude 2500 ft or above - Turn left and proceed inbound BYC NDB - Turn left on track 088° to intercept BYC track 118° to ROBEG <p>INITIAL CLIMB: 5000 ft</p>

CHANGE: EDITORIAL (142/10 164/10 179/10)

AFSBw 01 JUL 2010

HB 13 - 33

52°16.71'N
009°04.93'E

BÜCKEBURG (ETHB)