

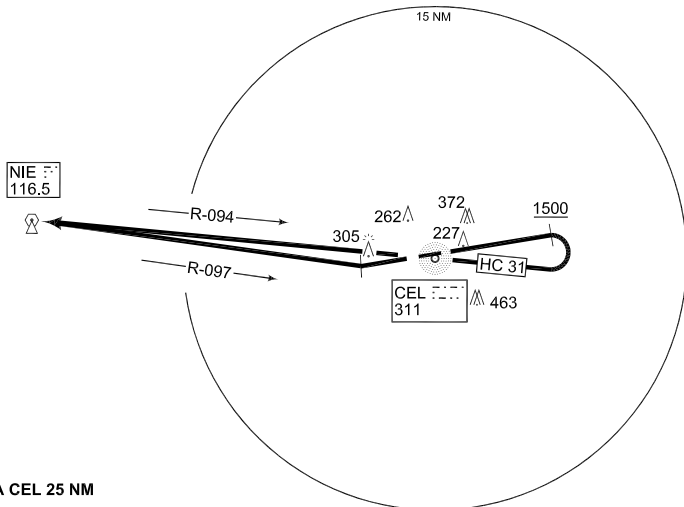
**PANS-OPS
INSTRUMENT DEPARTURE CHART**

**HC 11 - 31
CELLE (ETHC)**

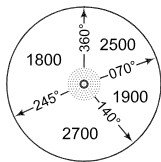
CELLE TWR 281.900 122.100		AD ELEV 128		BREMEN RADAR 259.725 131.325	
RWY	from - to	60	120	Reason	
26	DER - 1700 ft	347	694	ATC	



PROCEDURES FOR HELICOPTER ONLY



MSA CEL 25 NM



EMERG SAFE ALT 100 NM 5200

TA 5000

HC 11 (RWY 26)	<ul style="list-style-type: none"> - Climb on RWY heading until intercepting NIE R-097 - Proceed on NIE R-097 to NIE <p>INITIAL CLIMB ALTITUDE: 4000 ft</p>
HC 31 (RWY 08)	<ul style="list-style-type: none"> - Climb on RWY heading - When passing 1500 ft, turn right to CEL - Cross CEL and intercept NIE R- 094 - Proceed to NIE <p>INITIAL CLIMB ALTITUDE: 4000 ft</p>

CHANGE: EDITORIAL (164/10)

AFSBw 01 JUL 2010

HC 11 - 31

52°35.47'N
010°01.33'E

CELLE (ETHC)