

**PANS-OPS
INSTRUMENT DEPARTURE CHART**

**HC 12 - 32
CELLE (ETHC)**

CELLE TWR
281.900 122.100

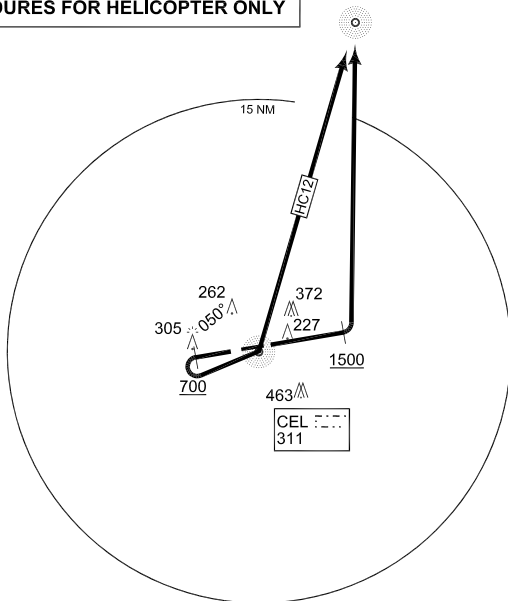
AD ELEV
128

BREMEN RADAR
259.725 131.325

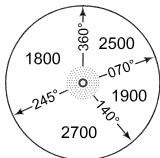


PROCEDURES FOR HELICOPTER ONLY

FSB
284



MSA CEL 25 NM



EMERG SAFE ALT 100 NM 5200

TA 5000

CHANGE: EDITORIAL (164/10)

AFSBw 01 JUL 2010

HC 12
(RWY 26)

- Climb on RWY heading
 - When passing 700 ft , turn left to CEL
 - Cross CEL and proceed to FSB
- INITIAL CLIMB ALTITUDE: 3000 ft

HC 32
(RWY 08)

- Climb on RWY heading
 - When passing 1500 ft , turn left to FSB
 - Proceed to FSB
- INITIAL CLIMB ALTITUDE: 3000 ft

HC 12 - 32

52°35.47'N
010°01.33'E

CELLE (ETHC)