

**PANS-OPS  
INSTRUMENT DEPARTURE CHART**

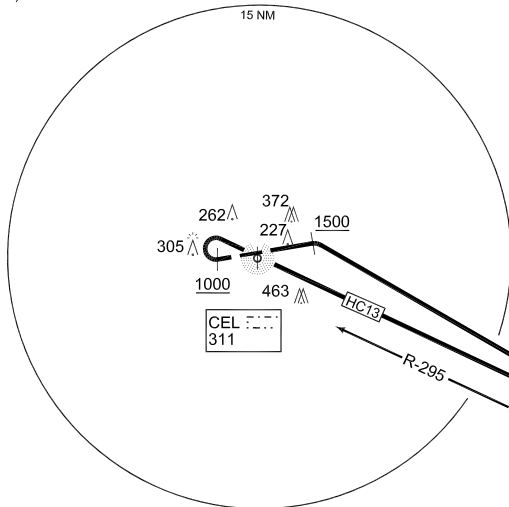
**HC 13 - 33  
CELLE (ETHC)**

CELLE TWR  
281.900 122.100

AD ELEV  
**128**

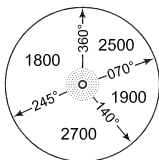
BREMEN RADAR  
259.725 131.325

**PROCEDURES FOR HELICOPTER ONLY**



HLZ CH120X  
117.3

**MSA CEL 25 NM**



**EMERG SAFE ALT 100 NM 5200**

**TA 5000**

|                           |   |
|---------------------------|---|
| <p>HC 13<br/>(RWY 26)</p> | <ul style="list-style-type: none"> <li>- Climb on RWY heading</li> <li>- When passing 1000 ft, turn right to CEL</li> <li>- Cross CEL and intercept HLZ R-295</li> <li>- Proceed to HLZ</li> </ul> <p>INITIAL CLIMB ALTITUDE: 4000 ft</p> |
| <p>HC 33<br/>(RWY 08)</p> | <ul style="list-style-type: none"> <li>- Climb on RWY heading</li> <li>- When passing 1500ft turn right to HLZ</li> <li>- Proceed to HLZ</li> </ul> <p>INITIAL CLIMB ALTITUDE: 4000 ft</p>  |

CHANGE: EDITORIAL (164/10)

AFSBw 01 JUL 2010

**HC 13 - 33**

52°35.47'N  
010°01.33'E

**CELLE (ETHC)**