

**PANS-OPS  
INSTRUMENT DEPARTURE CHART**

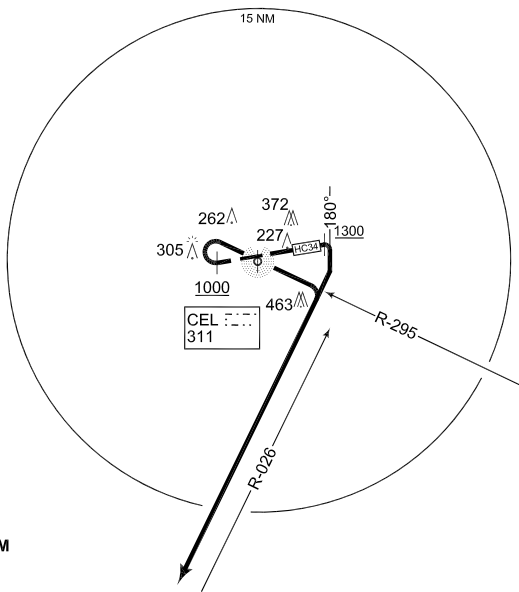
**HC 14 - 34  
CELLE (ETHC)**

CELLE TWR  
281.900 122.100

AD ELEV  
**128**

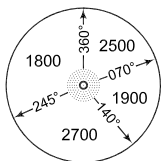
BREMEN RADAR  
259.725 131.325

**PROCEDURES FOR HELICOPTER ONLY**



HLZ CH120X  
117.3

**MSA CEL 25 NM**



DLE CH99X  
115.2

**EMERG SAFE ALT 100 NM 5200**

**TA 5000**

<p>HC 14 (RWY 26)</p>	<ul style="list-style-type: none"> <li>- Climb on RWY heading</li> <li>- When passing 1000 ft, turn right to CEL</li> <li>- Cross CEL and proceed on HLZ R-295 to intercept DLE R-026</li> <li>- Proceed on DLE R-026 to DLE</li> </ul> <p>INITIAL CLIMB ALTITUDE: 4000 ft</p>
<p>HC 34 (RWY 08)</p>	<ul style="list-style-type: none"> <li>- Climb on RWY heading</li> <li>- When passing 1300 ft, turn right on track 180° to intercept DLE R-026</li> <li>- Proceed on DLE R-026 to DLE</li> </ul> <p>INITIAL CLIMB ALTITUDE: 4000 ft</p>

CHANGE: EDITORIAL (164/10)

AFSBw 01 JUL 2010

**HC 14 - 34**

52°35.47'N  
010°01.33'E

**CELLE (ETHC)**