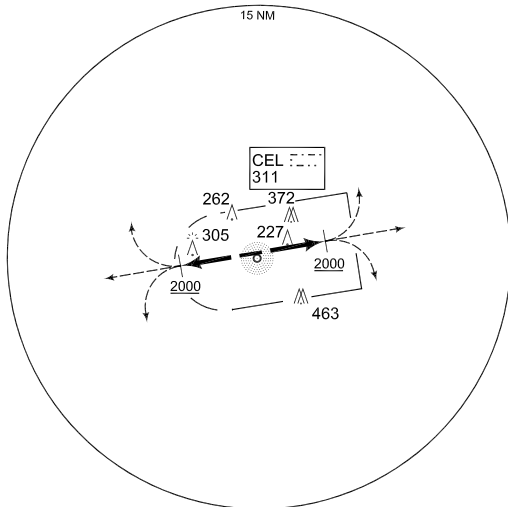


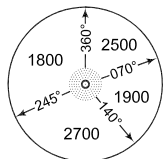
**PANS-OPS  
INSTRUMENT DEPARTURE CHART**

**HC 108 - 126  
CELLE (ETHC)**

CELLE TWR 281.900 122.100		AD ELEV <b>128</b>				BREMEN RADAR 259.725 131.325			
RWY	from - to	60	120	180	240	300	360	Reason	
<b>08</b>	<b>DER - 2000 ft</b>	469	938	1407	1876	2345	2814	ATC	
<b>26</b>	<b>DER - 2000 ft</b>	469	938	1407	1876	2345	2814	ATC	



**MSA CEL 25 NM**



**EMERG SAFE ALT 100 NM 5200**

**TA 5000**

HC 108 (RWY 08)	- Climb on RWY heading to 2000 ft - Continue as cleared by ATC
HC 126 (RWY 26)	- Climb on RWY heading to 2000 ft - Continue as cleared by ATC

CHANGE: EDITORIAL (164/10)

AFSBw 01 JUL 2010

**HC 108 - 126**

52°35.47'N  
010°01.33'E

**CELLE (ETHC)**