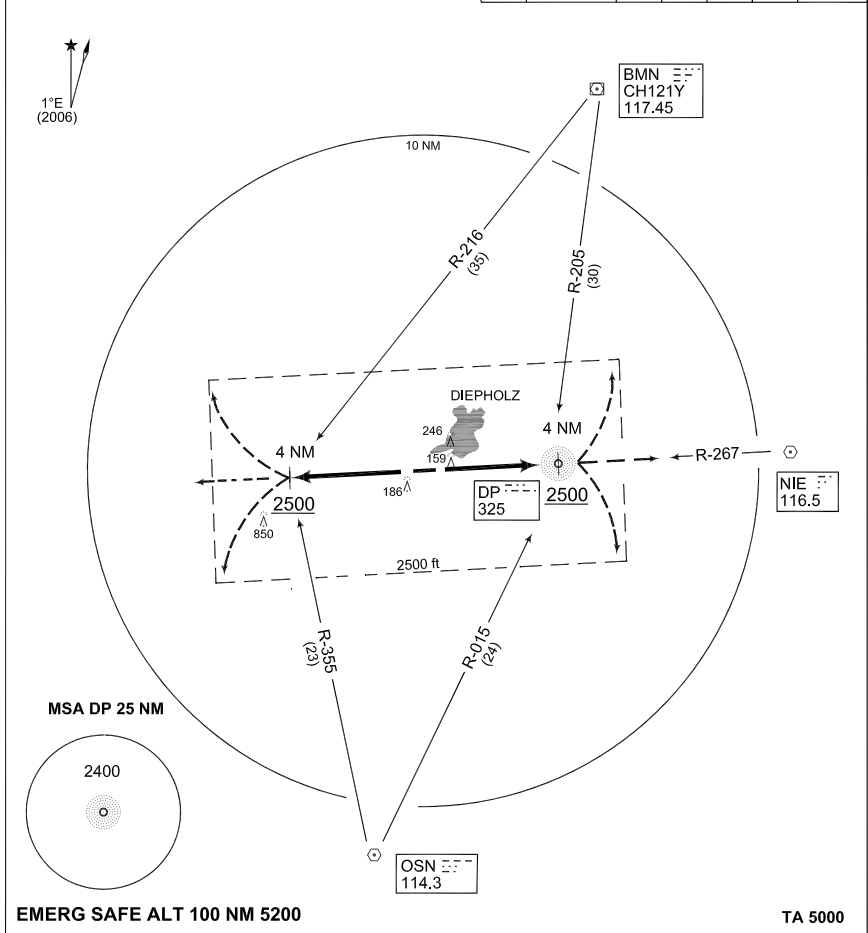


**PANS OPS
OPERATIONAL INSTRUMENT DEPARTURE CHART**

**ND 108 - 126
DIEPHOLZ (ETND)**

DIEPHOLZ TWR 379.300 140.600		BREMEN RADAR 372.550 125.025								
		AD ELEV 127		RWY	from - to	60	120	180	240	Reason
				08 26	DER - 2500 ft	590	1180	1770	2360	ATC



EMERG SAFE ALT 100 NM 5200

TA 5000

ND 108 (RWY 08)	- Climb straight ahead to 2500 ft - Continue as cleared by ATC
ND 126 (RWY 26)	- Climb straight ahead to 2500 ft - Continue as cleared by ATC
ND 108 - 126	- Climbout restrictions: Reach 2500 ft within 4NM

ND 108 - 126

52° 35.13'N
008°20.46'E

DIEPHOLZ (ETND)

CHANGE: EDITORIAL (164/10)

AFSBw 01 JUL 2010