

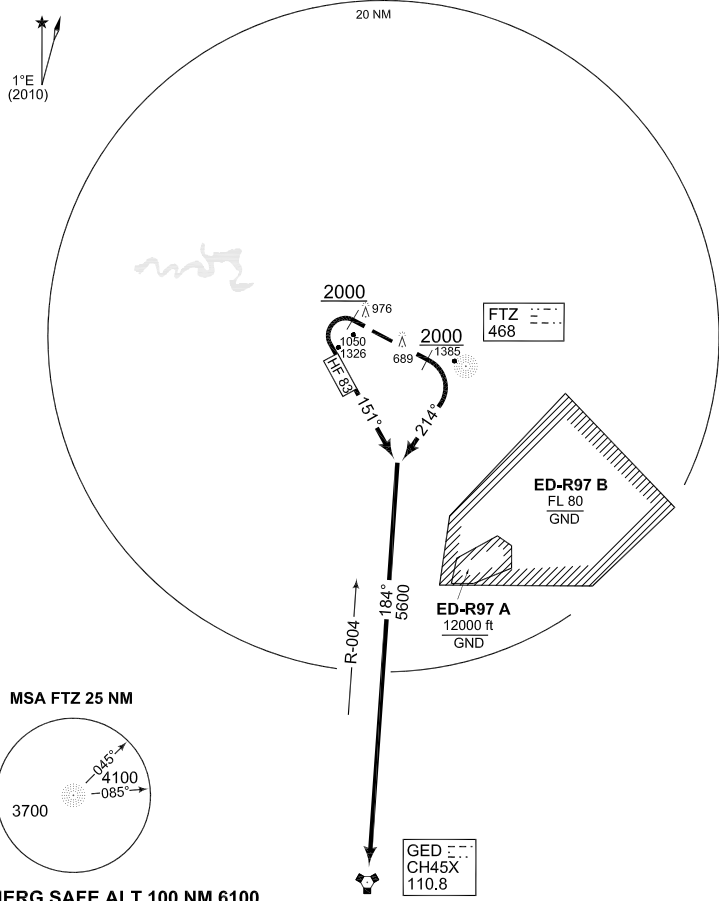
**TERPS
INSTRUMENT DEPARTURE CHART**

AD ELEV 566

**HF 83 - 93
FRITZLAR (ETHF)**

FRITZLAR TWR 284.600 122.100		FRITZLAR RADAR 253.500 123.300 135.600			LANGEN RADAR 379.900 127.725				
		RWY	Knots	60	120	180	240	300	to
		12	V/V (fpm)	251	502	753	1004	1255	700ft
		30	V/V (fpm)	440	880	1320	1760	2200	1700 ft

NOTE:
NOT USABLE FOR JET AIRCRAFT



EMERG SAFE ALT 100 NM 6100

TA 5000

HF 83 (RWY 30) (47)	-	Climb straight ahead
	-	When passing 2000 ft turn left on heading 151° to intercept GED R-004 and proceed to GED
HF 93 (RWY 12) (47)	-	Climb straight ahead
	-	When passing 2000 ft turn right on heading 214° to intercept GED R-004 and proceed to GED

CHANGE: ESA (39/12)

AFSBw 03 MAY 2012

HF 83 - 93

51°06.87'N
009°17.15'E

FRITZLAR (ETHF)