

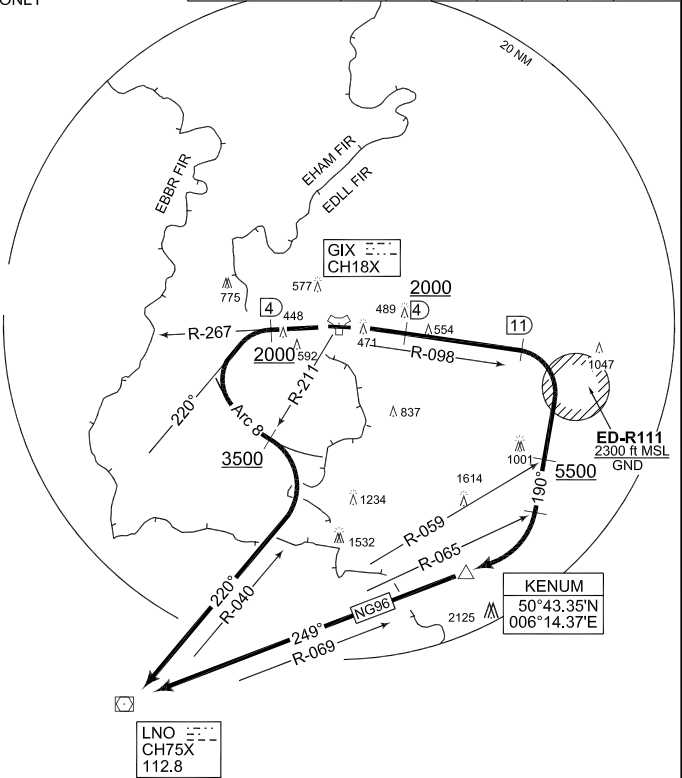
**TERPS  
INSTRUMENT DEPARTURE CHART**

AD ELEV 292

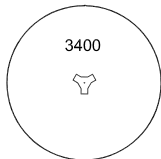
**NG 86 - 96  
GEILENKIRCHEN (ETNG)**

FRISBEE TWR			FRISBEE RADAR		LANGEN RADAR				BEEK RADAR		
378.575	140.075	120.050	244.550	123.725	60	120	180	240	300	360	Reason
<b>27</b>	DER - 2000 ft	548	1096	1644	2192	2740	3288	ATC			
<b>09</b>	DER - 2000 ft	499	998	1497	1996	2495	2994	ATC			
<b>09</b>	2000 - 5000 ft	270	540	810	1080	1350	1620	ATC			

**NOTE:**  
RADAR MONITORED ONLY



MSA GIX 25 NM



**EMERG SAFE ALT 100 NM 4200**

**TA 5000 (FRG)  
TA 3000 (NL)  
TA 4500 (B)**

NG 86  
(RWY 27)

- DO NOT EXCEED GIX ARC 8**
- Climb on GIX R-267 outbound to GIX/4 DME, pass GIX/4 DME at 2000 ft or above
  - Turn left on heading 220° to intercept ARC 8 GIX
  - Pass GIX R-211 at 3500 ft or above and turn right to intercept LNO R-040
  - Proceed inbound LNO

NG 96  
(RWY 09)

- Climb on GIX R-098 outbound, to GIX/11 DME, pass GIX/4 DME at 2000 ft or above
- At GIX/11 DME turn right to heading 190°
- Pass LNO R-059 at 5500 ft or above
- When passing LNO R-065 turn right to intercept LNO R-069
- Proceed inbound LNO

**NG 86 - 96**

50°57.65'N  
006°02.51'E

**GEILENKIRCHEN (ETNG)**

CHANGE: NOTE DEPICTION (2/8/11)

AFSBw 12 JAN 2012