

**PANS-OPS
OPERATIONAL INSTRUMENT DEPARTURE CHART**

AD ELEV 265

**SH 109 - 127
HOLZDORF (ETSH)**

HOLZDORF TWR
267.400 130.500

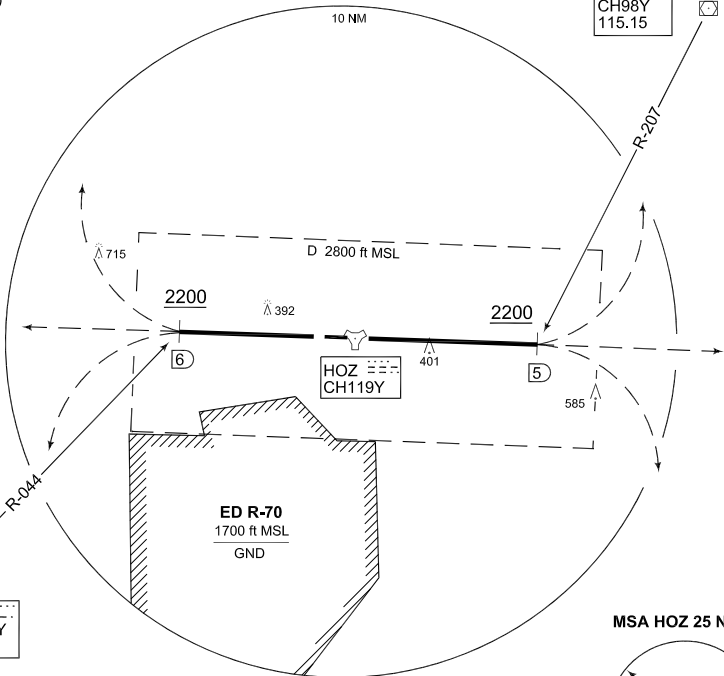
HOLZDORF RADAR
277.100 129.850

BREMEN RADAR
398.575 126.425

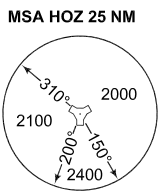
RWY	from - to	60	120	180	240	300	360	Reason
09	DER - 2200 ft	350	700	1050	1400	1750	2100	ATC
27	DER - 2200 ft	470	940	1410	1880	2350	2820	ATC



KLF
CH98Y
115.15



LEG
CH105Y
115.85



TA 5000

EMERG SAFE ALT 100 NM 6400

SH 109
(RWY 09)

- Climb straight ahead to HOZ/5 DME
- Pass HOZ/5 DME at 2200 ft or above
- Continue as cleared by ATC

SH 127
(RWY 27)

- Climb straight ahead to HOZ/6 DME
- Pass HOZ/6 DME at 2200 ft or above
- Continue as cleared by ATC

CHANGE: VAR (16/12)

AFSBw 08 MAR 2012

SH 109 - 127

51°46.07'N
013°10.06' E

HOLZDORF (ETSH)