

**PANS-OPS  
INSTRUMENT DEPARTURE CHART**

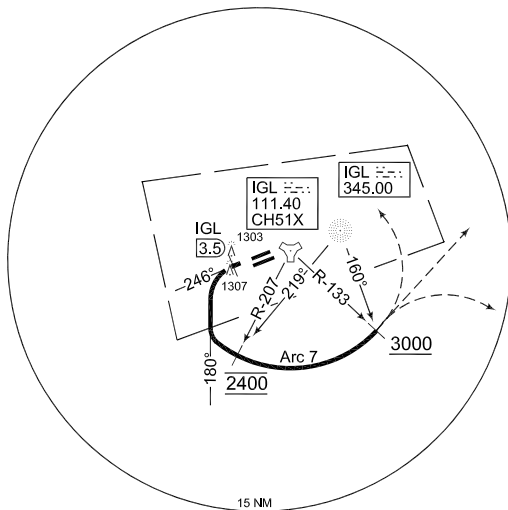
AD ELEV 1203

**SI 425  
INGOLSTADT/MANCHING (ETSI)**

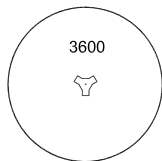
INGO TWR 373.200 125.250		INGO RADAR 278.100 120.600 125.575				MUENCHEN RADAR 242.200 VHF O/R				
		RWY	From - to	60	120	180	240	300	360	REASON
		25R	DER - 1700	486	972	1458	1944	2430	2916	OBST

**NOTE:**

- a) NOT FOR CIVIL USE
- b) DEP TURN LIMITED TO MAX KIAS 250
- c) NON TACAN EQUIPPED ACFT HAVE TO BE RADAR MONITORED
- d) NOT FOR CLOSE FORMATION



**MSA IGL 25 NM**



**EMERG SAFE ALT 100 NM 13500**

**TA 5000**

SI 425  
(RWY 25R)

- Minimum PDG for obstacles 8,0% (486ft/NM)
- Climb on track 246° to 2400 ft
  - At IGL/3.5 DME, turn left HDG 180° to intercept ARC 7 IGL
  - Pass IGL R-207 at 2400 ft  
(Non TACAN equipped acft: pass IGL NDB QDR 219 at 2400 ft)
  - Pass IGL R-133 at 3000 ft or above  
(Non TACAN equipped acft: pass IGL NDB QDR 160 at 3000 ft or above)
  - Continue as cleared by ATC

CHANGE: NOTE DEPICTION (27/8/11)

AFSBw 12 JAN 2012

**SI 425**

48°42.94'N  
011°32.02'E

**INGOLSTADT/MANCHING (ETSI)**