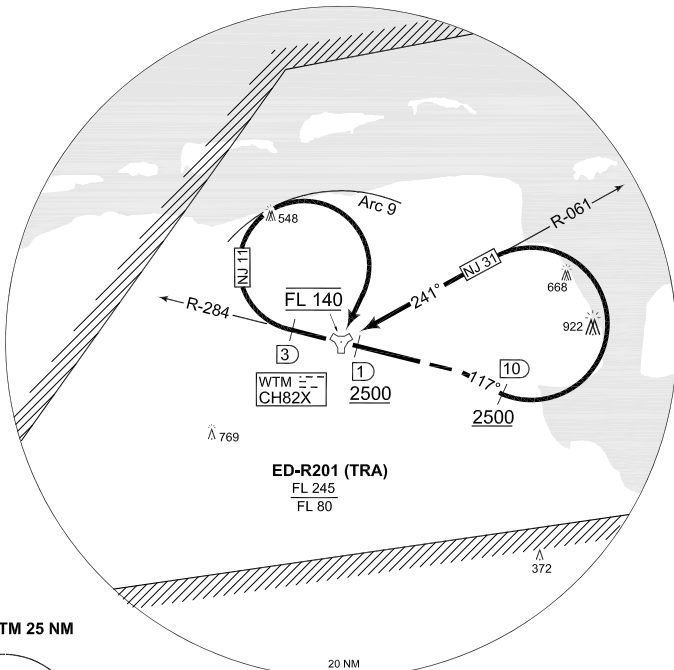


**TERPS
INSTRUMENT DEPARTURE CHART**

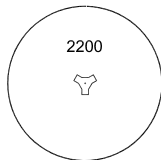
AD ELEV 24

**NJ 11 - 31
JEVER (ETNJ)**

JEVER TWR 379.250 118.725		WITTMUND RADAR 258.700		BREMEN RADAR 313.225 120.225					
		RWY	Knots	120	180	240	300	360	to
		10	V/V (fpm)	320	480	640	800	960	300 ft



MSA WTM 25 NM



EMERG SAFE ALT 100 NM 2700

TA 5000

NJ 11 (RWY 28) (23)	<ul style="list-style-type: none"> - Climb inbound WTM - Pass WTM/1 DME at 2500 ft or above - Depart WTM on R-284 - At WTM R-284/3 DME turn right (remain within arc 9) and proceed inbound WTM - Pass WTM at FL 140 or as cleared by ATC
NJ 31 (RWY 10) (35)	<ul style="list-style-type: none"> - Cross DER at 54ft or above - Climb on heading 117° to WTM/10 DME - Pass WTM/10 DME at 2500 ft or above - Turn left to intercept R-061 and proceed inbound WTM - Pass WTM at FL 140 or as cleared by ATC

CHANGE: WATER (278/11)

AFSBw 12 JAN 2012

NJ 11 - 31

53°32.01'N
007°53.32'E

JEVER (ETNJ)