

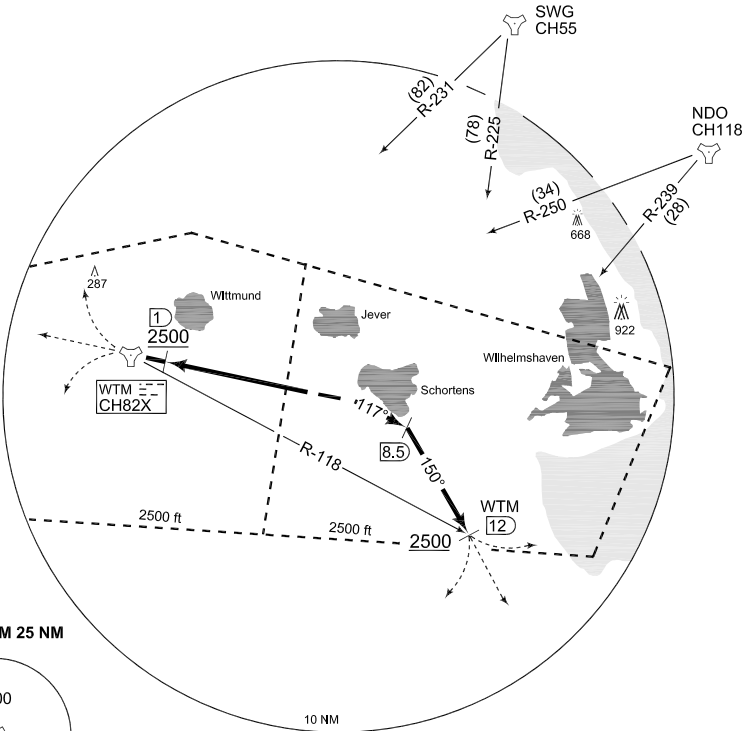
**TERPS
OPERATIONAL INSTRUMENT DEPARTURE CHART**

AD ELEV 24

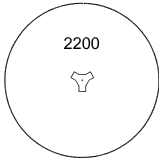
**NJ 110 - 128
JEVER (ETNJ)**

JEVER TWR 379.250 118.725		WITTMUND RADAR 258.700		BREMEN RADAR 313.225 120.225				
RWY	Knots	120	180	240	300	360	to	
10	V/V (fpm)	320	480	640	800	960	300 ft	

0°
(2005)



MSA WTM 25 NM



EMERG SAFE ALT 100 NM 2700

TA 5000

CHANGE: EDITORIAL (278/11)

NJ 110 (RWY 10)	<ul style="list-style-type: none"> Cross DER at 54 ft or above Climb on heading 117° to WTM 8.5 DME Turn right on heading 150° until passing WTM R-118/12 DME Continue as cleared by ATC <p>CLIMBOUT RESTRICTION: Pass WTM R-118/12 DME at 2500 ft or above</p>
NJ 128 (RWY 28)	<ul style="list-style-type: none"> Climb straight ahead to 2500 ft Continue as cleared by ATC <p>CLIMBOUT RESTRICTION: Reach 2500 ft within 4 NM after takeoff</p>

AFSBw 12 JAN 2012

NJ 110 - 128

53°32.01'N
007°53.32'E

JEVER (ETNJ)