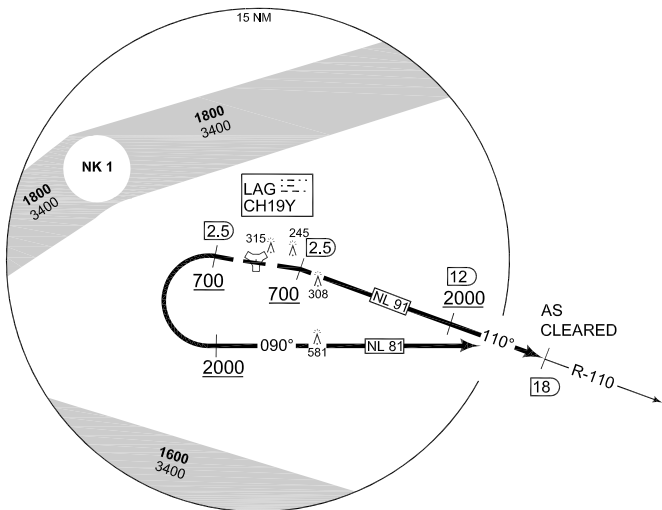


**TERPS  
INSTRUMENT DEPARTURE CHART**

AD ELEV 140

**NL 81 - 91  
LAAGE (ETNL)**

LAAGE TWR 336.400 118.425		LAAGE RADAR 358.650 133.625				BREMEN RADAR 259.825 124.175			
RWY	Knots	60	120	180	240	300	360	to	
28	V/V (fpm)	456	912	1368	1824	2280	2736	<b>3500 ft</b>	
10	V/V (fpm)	271	542	813	1084	1355	1626	<b>1800 ft</b>	



TA 5000

EMERG SAFE ALT 100 NM 3500

CHANGE: CORRECTION VAR (4/6/12)

NL 81 (RWY 28)  (29)	<ul style="list-style-type: none"> <li>- Climb straight ahead</li> <li>- Pass LAG/2.5 DME at 700 ft or above</li> <li>- Turn left on heading 090° to intercept LAG R-110 outbound.</li> <li>- Intercept heading 090° at 2000 ft or above</li> <li>- Pass LAG R-110/18 DME as cleared by ATC</li> <li>- INITIAL CLIMB: 4000 ft</li> </ul>
NL 91 (RWY 10)  (17)	<ul style="list-style-type: none"> <li>- Climb straight ahead</li> <li>- Pass LAG/2.5 DME at 700 ft or above</li> <li>- Turn right to intercept LAG R-110 outbound</li> <li>- Pass LAG R-110/12 DME at 2000 ft or above and 18 DME as cleared by ATC</li> <li>- INITIAL CLIMB: 4000 ft</li> </ul>

**NL 81 - 91**

53°55.09' N  
012°16.76' E

**LAAGE (ETNL)**

AFSBw 03 MAY 2012