

**TERPS
OPERATIONAL INSTRUMENT DEPARTURE CHART**

AD ELEV 140

**NL 110 - 128
LAAGE (ETNL)**

LAAGE TWR
336.400 118.425

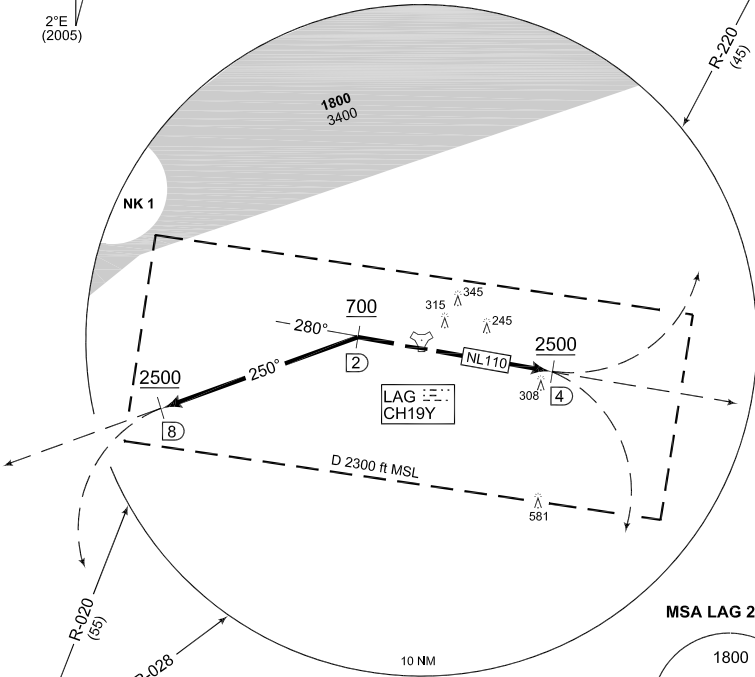
LAAGE RADAR
358.650 133.625

BREMEN RADAR
259.825 124.175

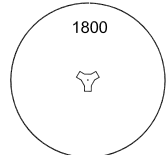
RWY	Knots	60	120	180	240	300	360	to
10	V/V (fpm)	271	542	813	1084	1355	1626	1800 ft
28	V/V (fpm)	230	460	690	920	1150	1380	1900 ft



TRT
CH21Y
108.45



MSA LAG 25 NM



BKD
CH124X
117.7

TA 5000

EMERG SAFE ALT 100 NM 3500

NL 110 (RWY 10)	<ul style="list-style-type: none"> - Climb straight ahead - Pass LAG/4 DME at 2500 ft or above - Continue as cleared by ATC - INITIAL CLIMB: 4000 ft
NL 128 (RWY 28)	<ul style="list-style-type: none"> - Climb on track 280° to LAG/2DME, pass 2 DME at 700 ft or above - Turn left and proceed on track 250° to LAG/8 DME, pass 8 DME at 2500 ft or above - Continue as cleared by ATC - INITIAL CLIMB: 4000 ft

CHANGE: CORRECTION VAR (46/12)

AFSBw 03 MAY 2012

NL 110 - 128

53°55.09' N
012°16.76' E

LAAGE (ETNL)