

**TERPS
OPERATIONAL INSTRUMENT DEPARTURE CHART**

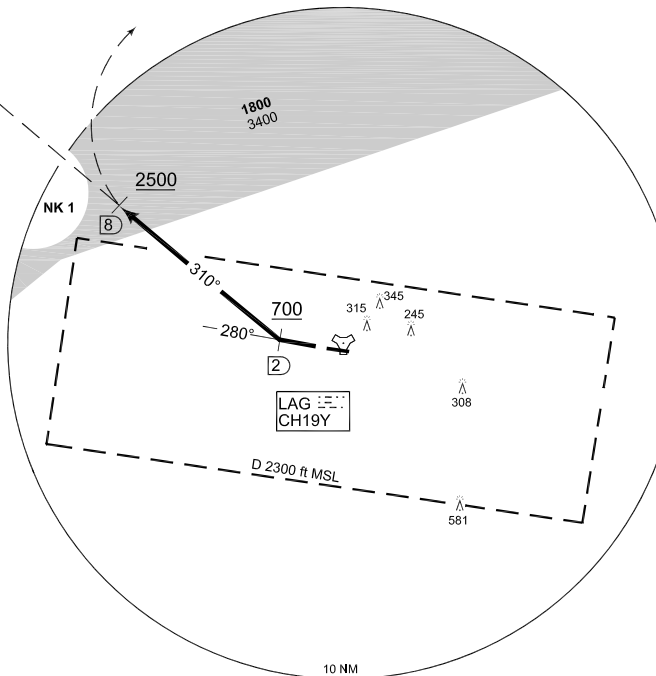
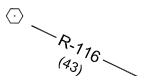
AD ELEV 140

**NL 228
LAAGE (ETNL)**

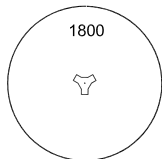
LAAGE TWR 336.400 118.425		LAAGE RADAR 358.650 133.625				BREMEN RADAR 259.825 124.175				
	RWY	Knots	60	120	180	240	300	360	to	
	28	V/V (fpm)	230	460	690	920	1150	1380	1900 ft	



MIC
112.2



MSA LAG 25 NM



EMERG SAFE ALT 100 NM 3500

TA 5000

NL 228
(RWY 28)

- Climb on track 280° to LAG/2DME, pass 2 DME at 700 ft or above
- Turn right and proceed on track 310° to LAG/8 DME, pass 8 DME at 2500 ft or above
- Continue as cleared by ATC
- INITIAL CLIMB: 4000 ft

CHANGE: CORRECTION VAR (46/12)

AFSBw 03 MAY 2012

NL 228

53°55.09' N
012°16.76' E

LAAGE (ETNL)