

**PANS-OPS  
INSTRUMENT DEPARTURE CHART**

AD ELEV 2044

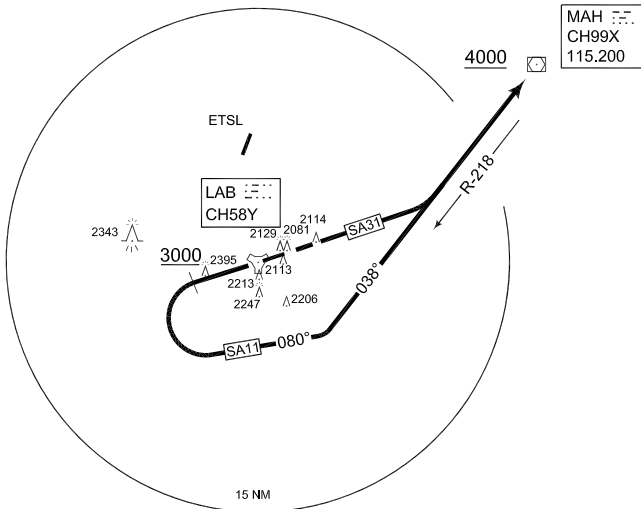
**SA 11 - 31  
LANDSBERG/LECH (ETSA)**

LANDSBERG TWR  
315.700 140.075 122.100

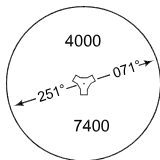
LANDSBERG RADAR  
278.900 309.200 123.300

MUENCHEN RADAR  
259.000 129.450

RWY	from - to	60	90	120	180	240	300	360	Reason
07	DER - 3500 ft	262	393	524	786	1048	1310	1572	ATC
25	DER - 4000 ft	262	393	524	786	1048	1310	1572	ATC



MSA LAB 25 NM



**EMERG SAFE ALT 100 NM 15300**

**TA 5000**

SA 11  
(RWY 25)

- Climb straight ahead until passing 3000 ft
- Turn left on track 080° to intercept MAH R-218 inbound
- Pass MAH at 4000 ft or above

**NOTE:**

- Max KIAS 220 until established on MAH R-218
- No turn before DER
- HIRTA sensitive ACFT check your limitations

SA 31  
(RWY 07)

- Climb straight ahead until intercepting MAH R-218 inbound
- Cross MAH at 4000 ft or above
- Max KIAS 220 until established on MAH R-218

SA 11 - 31

- INITIAL CLIMB: 4000 ft

CHANGE: NOTE DEPICTION (278/11)

AFSBw 12 JAN 2012

**SA 11 - 31**

48°04.23'N  
010°54.36'E

**LANDSBERG/LECH (ETSA)**