

**PANS-OPS**

**OPERATIONAL INSTRUMENT DEPARTURE CHART**

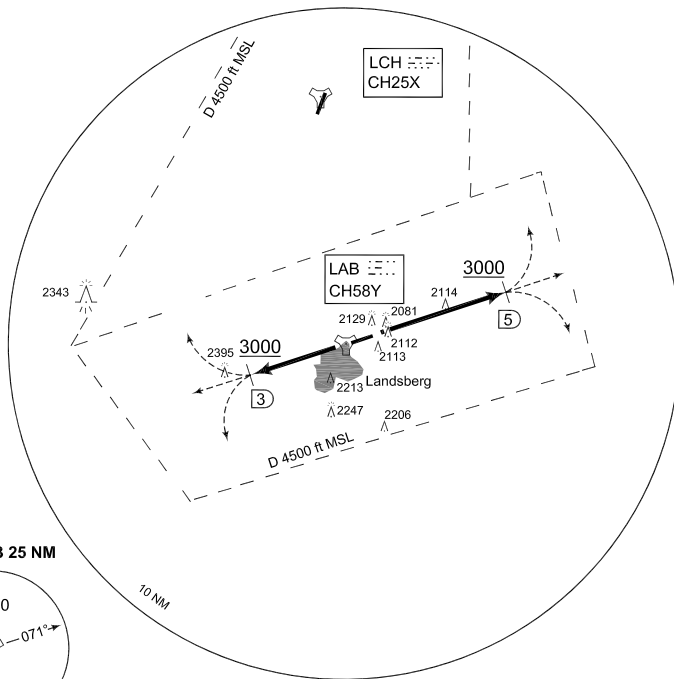
AD ELEV 2044

**SA 107 - 125  
LANDSBERG/LECH (ETSA)**

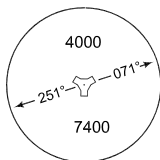
LANDSBERG TWR			LANDSBERG RADAR				MUENCHEN RADAR			
315.700	140.075	122.100	278.900	309.200	123.300	259.000	129.450	259.000	129.450	
RWY	from - to	60	90	120	180	240	300	360	Reason	
07	DER - 3500 ft	262	393	524	786	1048	1310	1572	ATC	
25	DER - 4000 ft	262	393	524	786	1048	1310	1572	ATC	

**NOTE:**

FOR NON TACAN EQUIPPED ACFT  
CLIMB STRAIGHT AHEAD TO 3000 FT THEN  
PROCEED ACCORDING TO ACC



**MSA LAB 25 NM**



**EMERG SAFE ALT 100 NM 15300**

**TA 5000**

CHANGE: NOTE DEPICTION (278/11)

SA 107 (RWY 07)	<ul style="list-style-type: none"> <li>- Climb straight ahead until LAB/5 DME</li> <li>- Pass LAB/5 DME at 3000 ft or above</li> <li>- Proceed as cleared by ATC</li> </ul>
SA 125 (RWY 25)	<ul style="list-style-type: none"> <li>- Climb straight ahead until LAB/3 DME</li> <li>- Pass LAB/3 DME at 3000 ft or above</li> <li>- Proceed as cleared by ATC</li> </ul> <p><b>NOTE:</b></p> <ul style="list-style-type: none"> <li>- HIRTA sensitive ACFT check your limitations</li> </ul>