

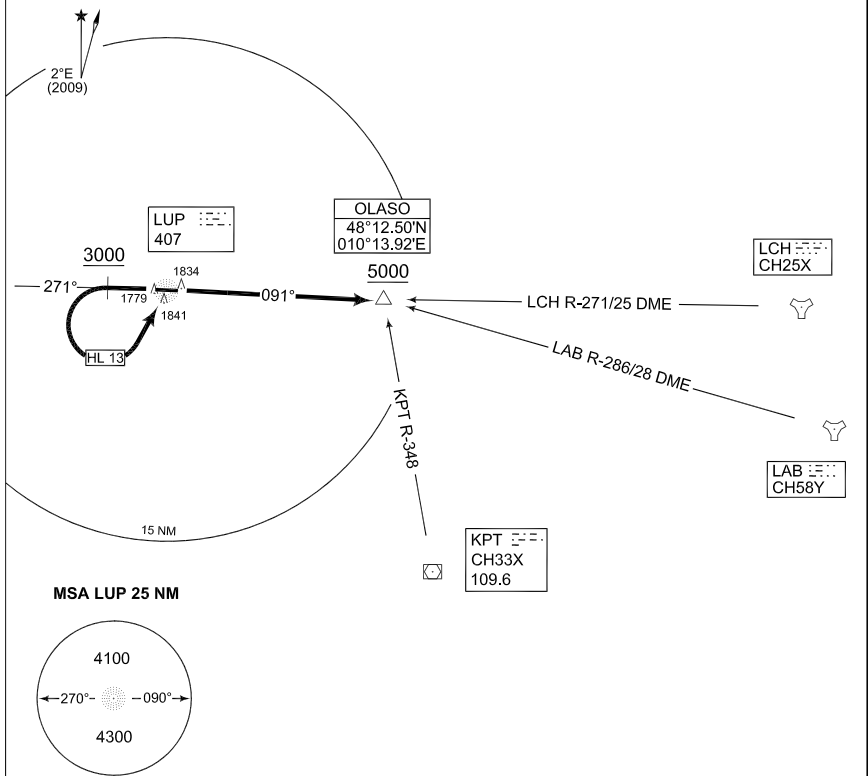
**MIPS**  
**INSTRUMENT DEPARTURE CHART**

AD ELEV 1766

**HL 13 - 33**  
**LAUPHEIM (ETHL)**

LIMA TWR 376.100 138.750 x		LIMA RADAR 371.800 119.100				MUENCHEN RADAR 259.000 129.450				
		RWY	to	60	120	180	240	300	360	Reason
		09	5000 ft	260	520	1040	1300	1560	1820	ATC

**CAUTION:**  
CLOSE IN OBSTACLE:  
TWR 198 M S OF RWY 1841 FT  
**NOTE:**  
NOT USABLE FOR ACFT CAT D AND E



**EMERG SAFE ALT 100 NM 14400**

**TA 5000**

HL 13 (RWY 27)	<ul style="list-style-type: none"> <li>- Climb on track 271°</li> <li>- When passing 3000 ft or above turn left inbound LUP NDB and continue climb to 5000 ft</li> <li>- When crossing LUP NDB intercept track 091° to cross OLASO at 5000 ft or above</li> </ul> <p><b>NOTE:</b></p> <ul style="list-style-type: none"> <li>- Departure turn limited to Max KIAS 180</li> <li>- No turn before DER</li> </ul>
HL 33 (RWY 09)	<ul style="list-style-type: none"> <li>- Climb on LUP NDB track 091° to reach OLASO at 5000 ft or above</li> </ul>

CHANGE: NOTE DEPICTION (278/11)

AFSBw 12 JAN 2012

**HL 13 - 33**

48°13.21'N  
009°54.61'E

**LAUPHEIM (ETHL)**