

**PANS-OPS
INSTRUMENT DEPARTURE CHART**

AD ELEV 1822

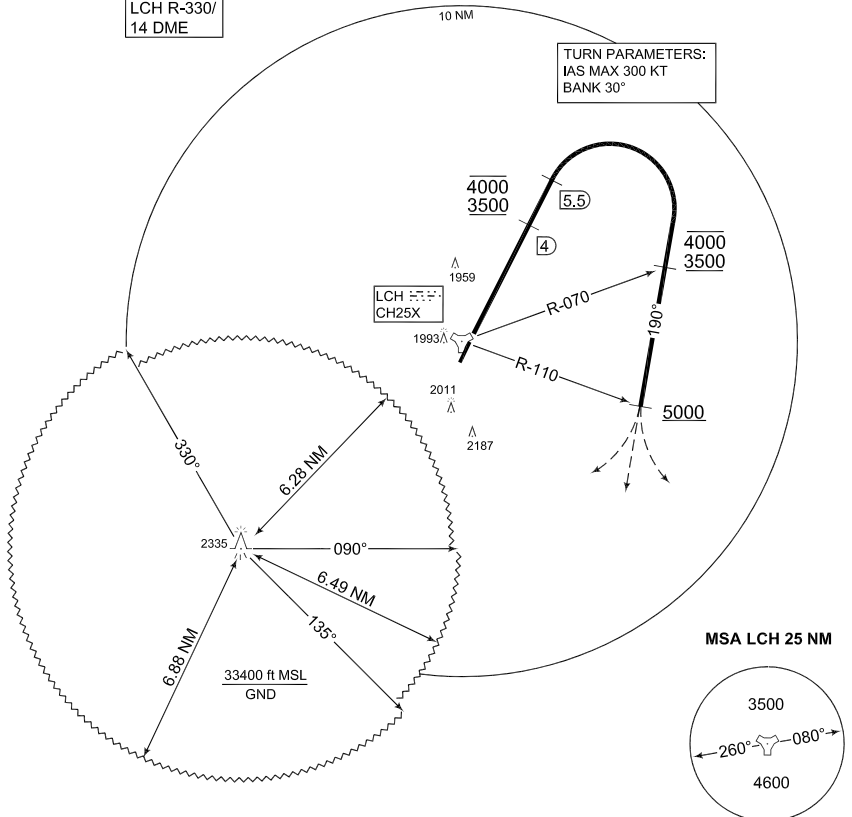
**SL 303
LECHFELD (ETSL)**

LECHFELD TWR 296.725 135.150	LANDSBERG RADAR 278.900 309.200 344.000	LECHFELD RADAR 358.650 278.050 129.025
MUENCHEN RADAR 259.000 129.450	RWY 03	from - to 60 120 180 240 300 Reason 496 992 1488 1984 2480 ATC

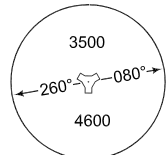


PESIM
48°23.95'N
010°41.23'E
LCH R-330/
14 DME

TURN PARAMETERS:
IAS MAX 300 KT
BANK 30°



MSA LCH 25 NM



TA 5000

EMERG SAFE ALT 100 NM 14 800

- | | |
|--------------------|--|
| SL 303
(RWY 03) | <ul style="list-style-type: none"> - Climb straight ahead to LCH/5.5 DME (Pass LCH/4 DME between 3500 ft and 4000 ft) - At LCH/5.5 DME turn right heading 190° - Pass LCH R-070 between 3500 ft and 4000 ft - Pass LCH R-110 not below 5000 ft |
|--------------------|--|

CHANGE: EDITORIAL (278/11)

AFSBw 12 JAN 2012

SL 303

48°11.13'N
010°51.67'E

LECHFELD (ETSL)