

**PANS-OPS
INSTRUMENT DEPARTURE CHART**

AD ELEV 1822

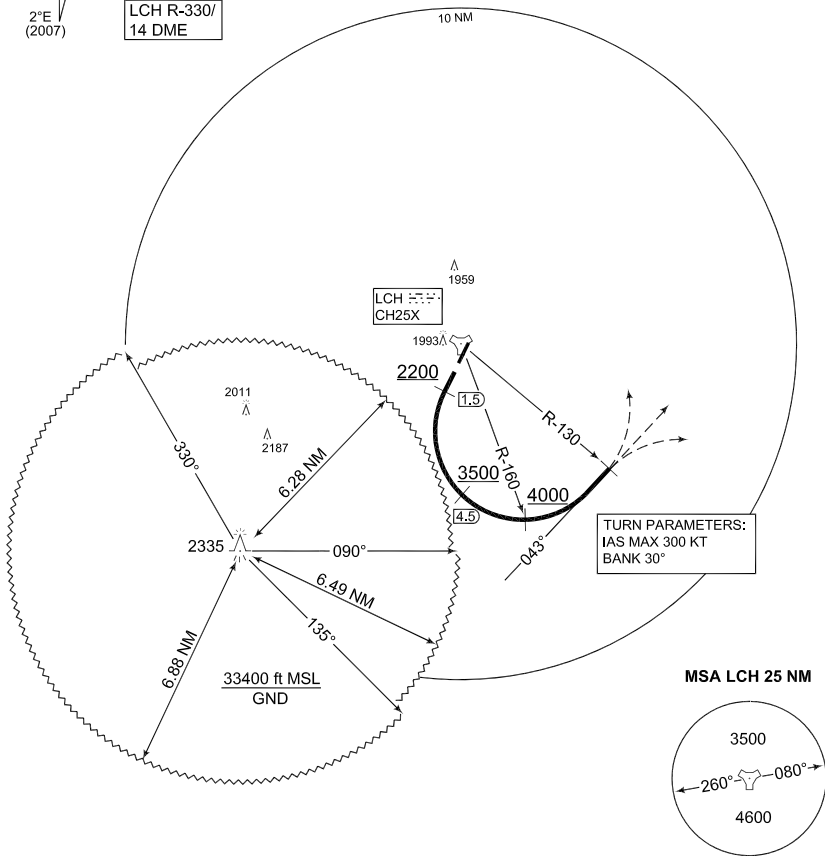
**SL 921
LECHFELD (ETSL)**

LECHFELD TWR 296.725 135.150		LANDSBERG RADAR 278.900 309.200 344.000			LECHFELD RADAR 358.650 278.050 129.025				
MUENCHEN RADAR 259.000 129.450		RWY	from - to	60	120	180	240	300	Reason
		21	DER - 2200 ft	606	1212	1818	2424	3030	ATC
			2200 - 4000 ft	390	780	1170	1560	1950	ATC

NOTE:
NOT FOR CLOSE FORMATION

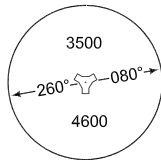


PESIM
48°23.95'N
010°41.23'E
LCH R-330/ 14 DME



TURN PARAMETERS:
IAS MAX 300 KT
BANK 30°

MSA LCH 25 NM



EMERG SAFE ALT 100 NM 14 800

TA 5000

SL 921
(RWY 21)

- Climb straight ahead to LCH/1.5 DME (Pass LCH/1.5 DME not below 2200 ft)
- Turn left to heading 043° (Pass LCH/4.5 DME not below 3500 ft)
- Cross R-160 not below 4000 ft
- Maintain heading 043° until R-130

SL 921

48°11.13'N
010°51.67'E

LECHFELD (ETSL)

CHANGE: NOTE DEPICTION (278/11)

AFSBw 12 JAN 2012