

**TERPS
INSTRUMENT DEPARTURE CHART**

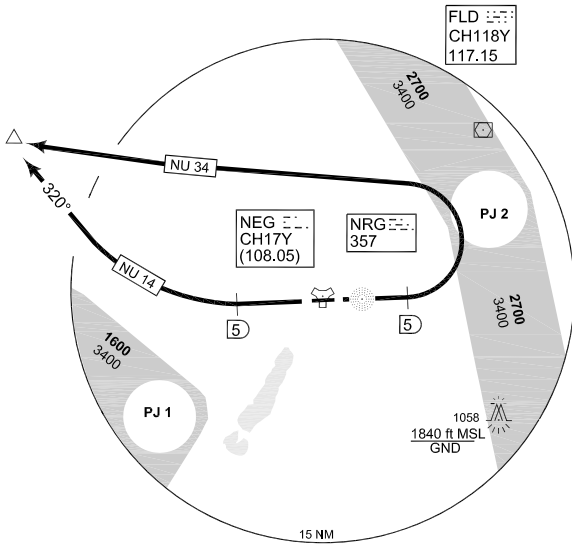
AD ELEV 228

**NU 14 - 34
NEUBRANDENBURG (ETNU)**

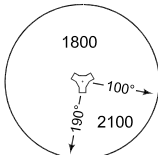
NEUBRANDENBURG TWR 369.350 119.175	NEUBRANDENBURG RADAR 358.750 123.300	BREMEN RADAR 373.975 134.650							
	RWY	Knots	90	120	180	240	300	360	to
	09	V/V (fpm)	375	500	750	1000	1250	1500	1800 ft
	27	V/V (fpm)	375	500	750	1000	1250	1500	1800 ft



LEGSA
53°45.20'N
12°47.38'E
FLD R-269/
28 DME



MSA NEG 25 NM



EMERG SAFE ALT 100 NM 3100

TA 5000

NU 14 (RWY 27)	<ul style="list-style-type: none"> - Climb on runway heading to NEG/5 DME - Turn right on track 320° and proceed to LEGSA (53°45.20'N 12°47.38'E) - INITIAL CLIMB: 4000 ft
NU 34 (RWY 09)	<ul style="list-style-type: none"> - Climb on runway heading to NEG/5 DME - Turn left and proceed to LEGSA (53°45.20'N 12°47.38'E) - INITIAL CLIMB: 4000 ft

CHANGE: NLES (270/11, 278/11)

AFSBw 12 JAN 2012