

**PANS-OPS  
OPERATIONAL INSTRUMENT DEPARTURE CHART**

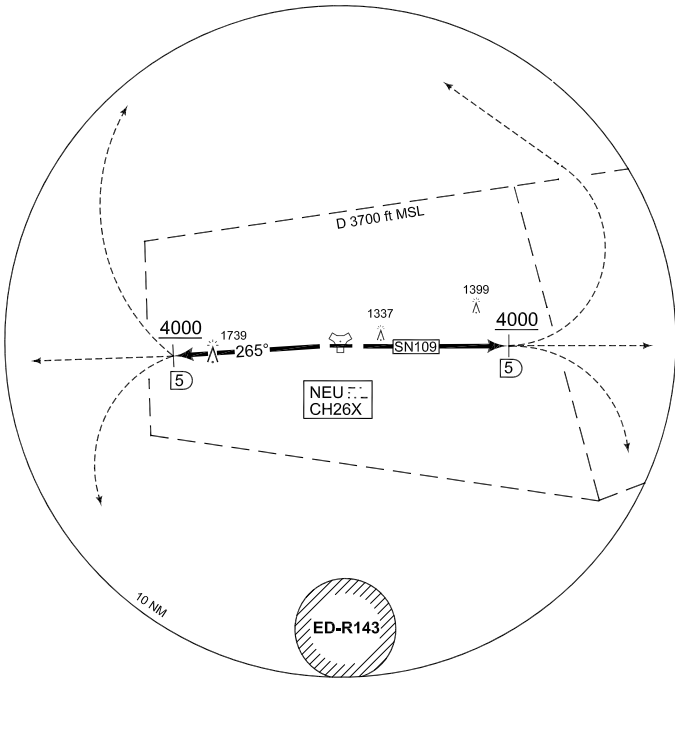
AD ELEV 1250

**SN 109 - 127  
NEUBURG (ETSN)**

DONAU TWR 369.100 129.850		DONAU RADAR 275.650 130.150		MUENCHEN RADAR 242.200 VHF O/R				
RWY	From - to	120	180	240	300	360	REASON	
09	DER - 4000 ft	658	1316	1974	2632	3290	ATC	
27	DER - 4000 ft	627	1254	1881	2508	3135	ATC	



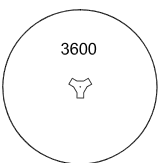
NOBRU  
48°58.13'N  
011°06.15'E  
NEU R-342/  
16 DME



DONIX  
48°41.58'N  
010°45.28'E  
NEU R-267/  
18 DME



**MSA NEU 25 NM**



**EMERG SAFE ALT 100 NM 13500**

**TA 5000**

CHANGE: EDITORIAL (278/11)

SN 109 (RWY 09)	<ul style="list-style-type: none"> <li>Climb straight ahead to NEU/5 DME</li> <li>Pass NEU/5 DME at 4000 ft or above</li> <li>Continue as cleared by ATC</li> </ul>
SN 127 (RWY 27)	<ul style="list-style-type: none"> <li>No turn before DER</li> <li>Climb on track 265° to NEU/5 DME</li> <li>Pass NEU/5 DME at 4000 ft or above</li> <li>Continue as cleared by ATC</li> </ul>

AFSBw 12 JAN 2012

**SN 109 - 127**

48°42.66'N  
011°12.69'E

**NEUBURG (ETSN)**