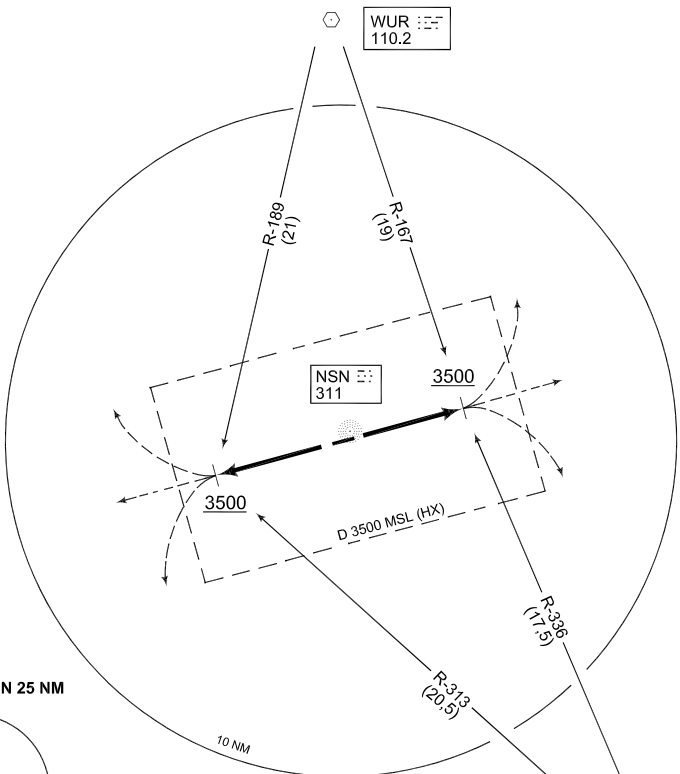


**TERPS  
OPERATIONAL INSTRUMENT DEPARTURE CHART**

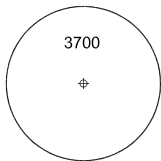
AD ELEV 1536

**HN 107 - 125  
NIEDERSTETTEN (ETHN)**

STETTEN TWR 280.600 122.100		STETTEN RADAR 251.250 139.300 123.300				LANGEN RADAR 398.650 135.725			
RWY	Knots	60	120	180	240	300	to		
07	V/V (fpm)	370	740	1110	1480	1850	3500 ft		
25	V/V (fpm)	401	802	1203	1604	2005	3500 ft		



MSA ARP ETHN 25 NM



EMERG SAFE ALT 100 NM 6400

DKB CH 125X  
117.8

TA 5000

CHANGE: EDITORIAL (278/11)

HN 107 (RWY 07)	<ul style="list-style-type: none"> <li>- Departure end crossing altitude 1570 ft MSL</li> <li>- Climb straight ahead to 3500 ft</li> <li>- Continue as cleared by ATC</li> </ul>
HN 125 (RWY 25)	<ul style="list-style-type: none"> <li>- Departure end crossing altitude 1570 ft MSL</li> <li>- Climb straight ahead to 3500 ft</li> <li>- Continue as cleared by ATC</li> </ul>

**HN 107 - 125**

49°23.51'N  
009°57.49'E

**NIEDERSTETTEN (ETHN)**

AFSBw 12 JAN 2012