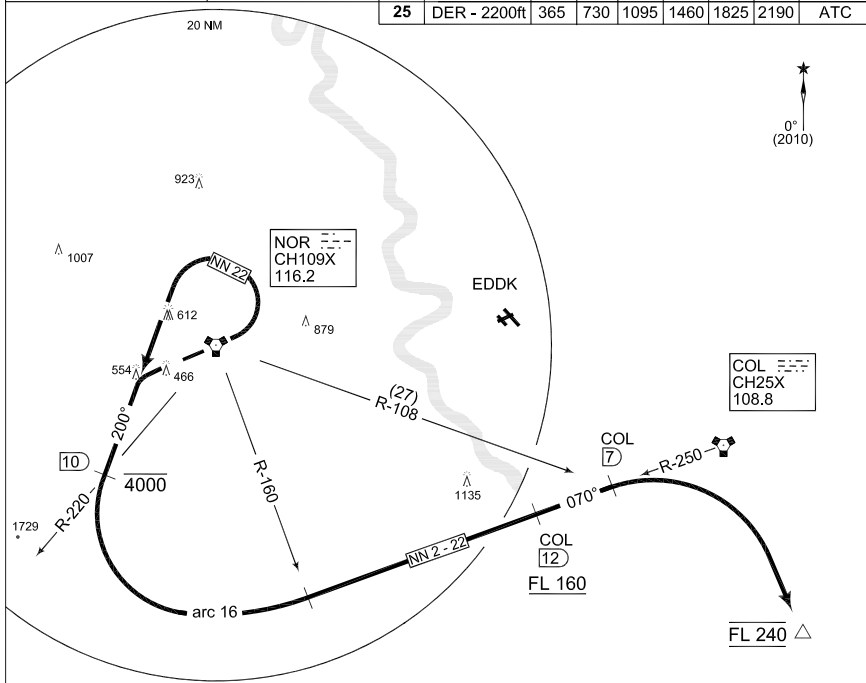


**TERPS
INSTRUMENT DEPARTURE CHART**

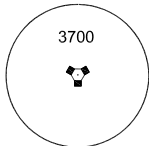
AD ELEV 385

**NN 2 - 22
NOERVENICH (ETNN)**

NOERVENICH TWR 251.100 122.100 136.200		NOERVENICH RADAR 281.900 379.250 123.300 129.050			LANGEN RADAR 344.550 135.350 126.325							
RHEIN RADAR 132.330 372.125		LIPPE RADAR 314.600		RWY	From - to	60	120	180	240	300	360	Reason
				07	DER - 1800ft	442	884	1326	1768	2210	2652	ATC
				25	DER - 2200ft	365	730	1095	1460	1825	2190	ATC



MSA NOR 25 NM



EMERG SAFE ALT 100 NM 4200

TA 5000

NN 2 (RWY 25)	-	Turn left to track 200°
	-	Continue via NN 2 - 22
NN 22 (RWY 07)	-	Turn left to track 200°
	-	Continue via NN 2 - 22
NN 2 - 22	-	Cross NOR R-220/10 DME at 4000 ft or below and turn left to proceed on NOR arc 16 until crossing NOR R-160
	-	Proceed on track 070°/R-250 inbound COL
	-	Cross COL R-250/12 DME at FL 160 or above
	-	At COL R-250/7 DME turn right inbound ROLIS (COL R-157/22 DME)
	-	Cross ROLIS at FL 240

CHANGE: EDITORIAL (278/11)

AFSBw 12 JAN 2012

NN 2 - 22

50°49.87'N
006°39.49'E

NOERVENICH (ETNN)