

**TERPS
OPERATIONAL INSTRUMENT DEPARTURE CHART**

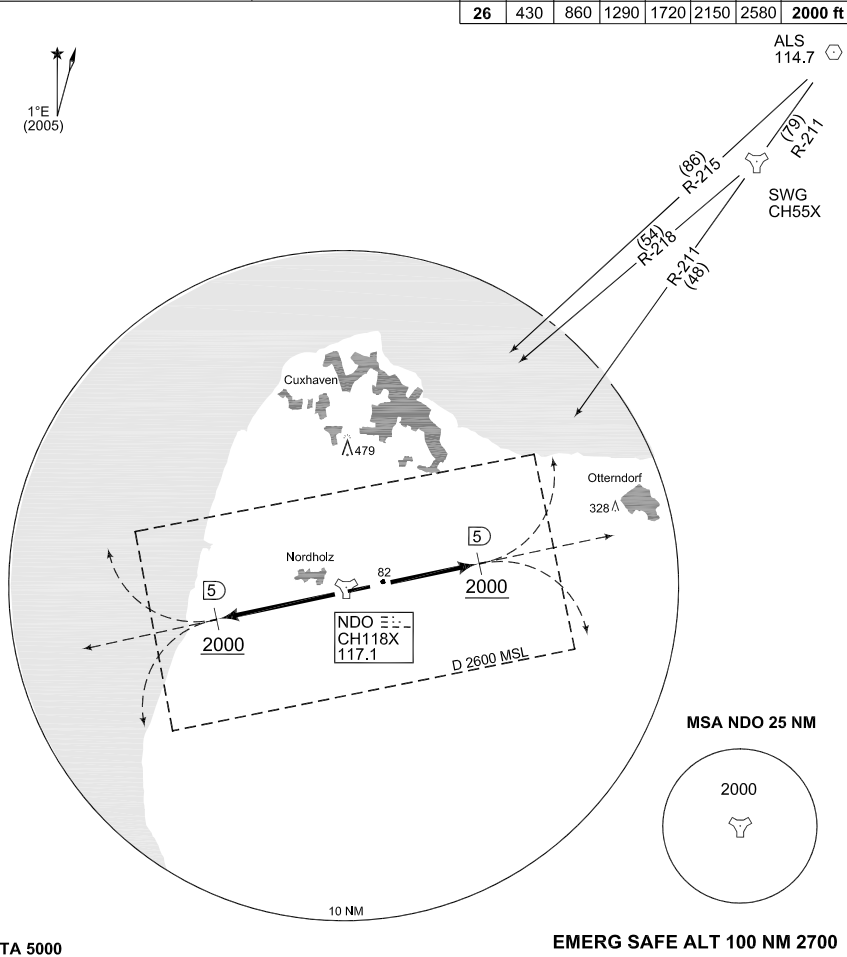
AD ELEV 74

**MN 108 - 126
NORDHOLZ (ETMN)**

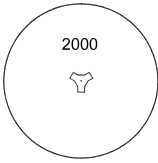
NORDHOLZ TWR 315.700	NORDHOLZ RADAR 278.350 129.850		BREMEN RADAR 371.750 124.075					
	RWY	60	120	180	240	300	360	to
	08	468	936	1404	1872	2340	2808	2000 ft
	26	430	860	1290	1720	2150	2580	2000 ft



ALS 114.7



MSA NDO 25 NM



TA 5000

EMERG SAFE ALT 100 NM 2700

CHANGE: EDITORIAL (278/11)

- | | |
|--------------------|--|
| MN 108
(RWY 08) | - Climb on heading 080° up to 2000 ft
- Pass 2000 ft within NDO/5 DME
- Continue as cleared by ATC |
| MN 126
(RWY 26) | - Climb on heading 260° up to 2000 ft
- Pass 2000 ft within NDO/5 DME
- Continue as cleared by ATC |

AFSBw 12 JAN 2012

MN 108 - 126

53°46.06'N
008°39.51'E

NORDHOLZ (ETMN)