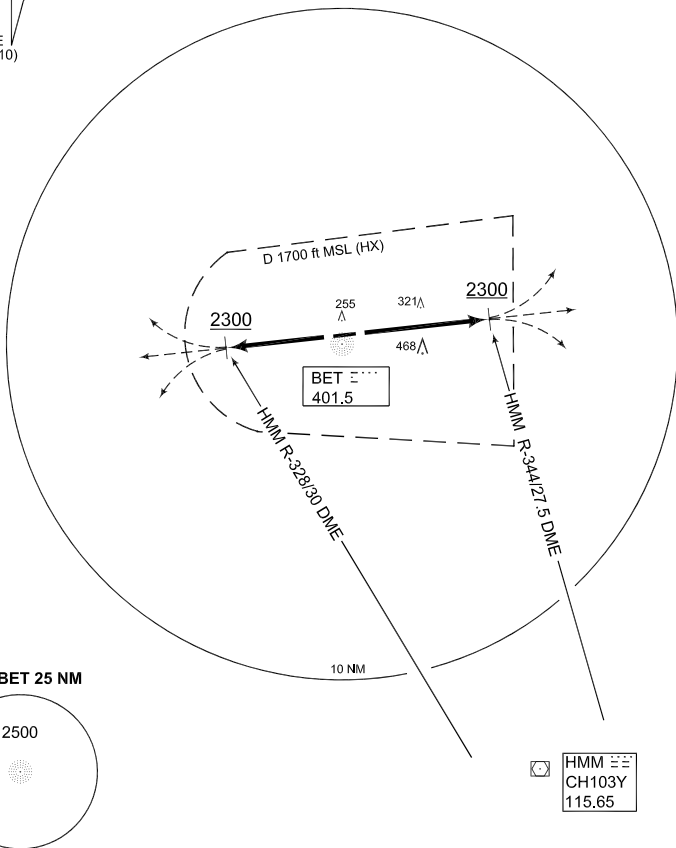


**TERPS
INSTRUMENT DEPARTURE CHART**

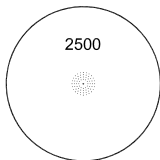
AD ELEV 129

**HE 108 - 126
RHEINE - BENTLAGE (ETHE)**

BENTLAGE TWR 254.700 122.100		BENTLAGE RADAR 398.700 140.750 123.300			BREMEN RADAR 372.550 125.025		
	RWY	Knots	60	120	180	240	to Reason
	08	V/V (fpm)	544	1088	1632	2176	2300 ft ATC
	26	V/V (fpm)	543	1086	1629	2172	2300 ft ATC



MSA BET 25 NM



EMERG SAFE ALT 100 NM 4200

TA 5000

HE 108 (RWY 08)	<ul style="list-style-type: none"> - Climb straight ahead to 2300 ft MSL - Reach 2300 ft MSL within 4 NM (HMM R-344/27.5 DME) - Continue as cleared by ATC
HE 126 (RWY 26)	<ul style="list-style-type: none"> - Climb straight ahead to 2300 ft MSL - Reach 2300 ft MSL within 4 NM (HMM R-328/30 DME) - Continue as cleared by ATC

HE 108 - 126

52°17.47'N
007°23.22'E

RHEINE - BENTLAGE (ETHE)

CHANGE: RWY DIRECTION, PROCEDURE NAME (24/1/11)

AFSBw 17 NOV 2011