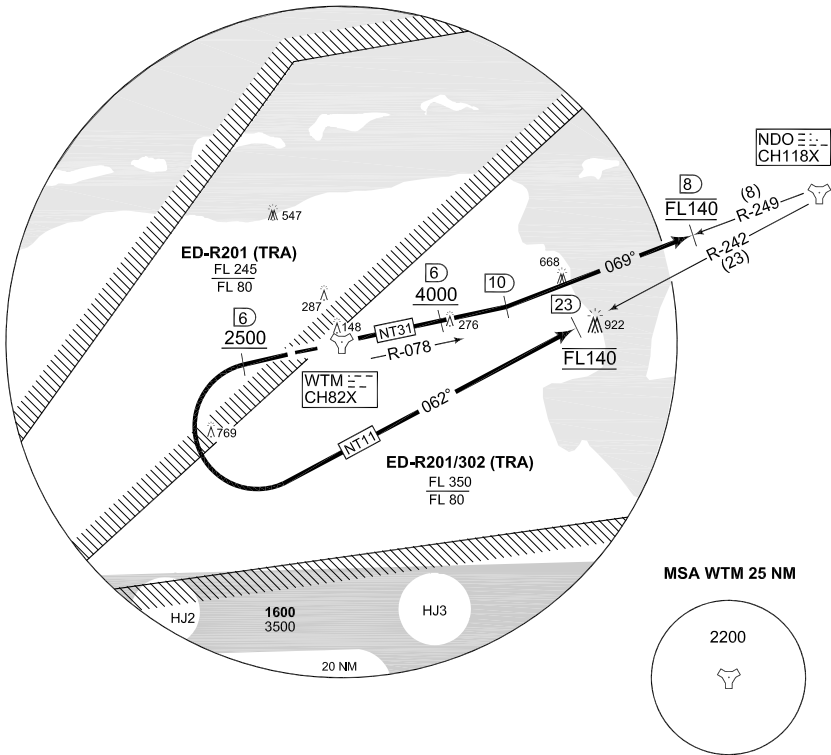


**TERPS
INSTRUMENT DEPARTURE CHART**

AD ELEV 26

**NT 11 - 31
WITTMUNDHAFEN (ETNT)**

WITTMUND TWR 386.875 118.725		WITTMUND RADAR 248.050 123.600				BREMEN RADAR 313.225 120.225			
RWY	Knots	120	180	240	300	360	to		
26	V/V (fpm)	480	720	960	1200	1440	1300 ft		
08	V/V (fpm)	426	639	852	1065	1278	100 ft		



AFSBw 12 JAN 2012

<p>NT 11 (RWY 26) (42)</p>	<ul style="list-style-type: none"> - Climb straight ahead to WTM/6 DME, pass 6 DME at 2500 ft or above - Turn left to intercept NDO R-242 inbound - Proceed to NDO R-242/23 DME, pass 23 DME at FL 140 or as cleared by ATC
<p>NT 31 (RWY 08) (29)</p>	<ul style="list-style-type: none"> - Climb straight ahead inbound WTM - Proceed on WTM R-078 to 10 DME, pass 6 DME at 4000 ft or above - At WTM R-078/10 DME turn left to intercept NDO R-249 inbound - Proceed to NDO R-249/8 DME, pass 8 DME at FL 140 or as cleared by ATC