

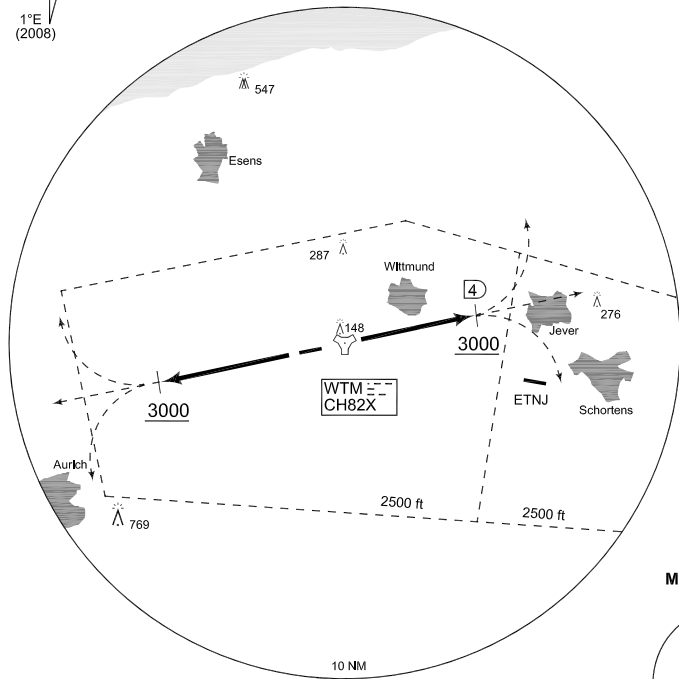
MIPS
OPERATIONAL INSTRUMENT DEPARTURE CHART

NT 108 - 126
WITTMUNDHAFEN (ETNT)

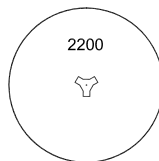
WITTMUND TWR 386.875 118.725		WITTMUND RADAR 248.050 123.600				BREMEN RADAR 313.225 120.225			
	RWY	From - to	60	120	180	240	300	360	Reason
	26	DER - 3000 ft	698	1396	2094	2792	3490	4188	ATC
	08	DER - 3000 ft	545	1090	1635	2180	2725	3270	ATC

NOTE:
NT108 (RWY 08) FOR HOMEBASED AIRCRAFT ONLY

NDO
CH118X

MSA WTM 25 NM



TA 5000

EMERG SAFE ALT 100 NM 2700

CHANGE: NOTE DEPICTION (278/11)

NT 108
(RWY 08)

- Climb straight ahead to WTM/4 DME
 - Continue as cleared by ATC
- CLIMBOUT RESTRICTION: Reach 3000 ft within 4DME

NT 126
(RWY 26)

- Climb straight until passing 3000 ft MSL
 - Continue as cleared by ATC
- CLIMBOUT RESTRICTION: Reach 3000 ft within 7 DME
Departure limited to 300 KIAS (556 km/h) maximum

AFSBw 12 JAN 2012

NT 108 - 126

53°32.87'N
007°40.04'E

WITTMUNDHAFEN (ETNT)