

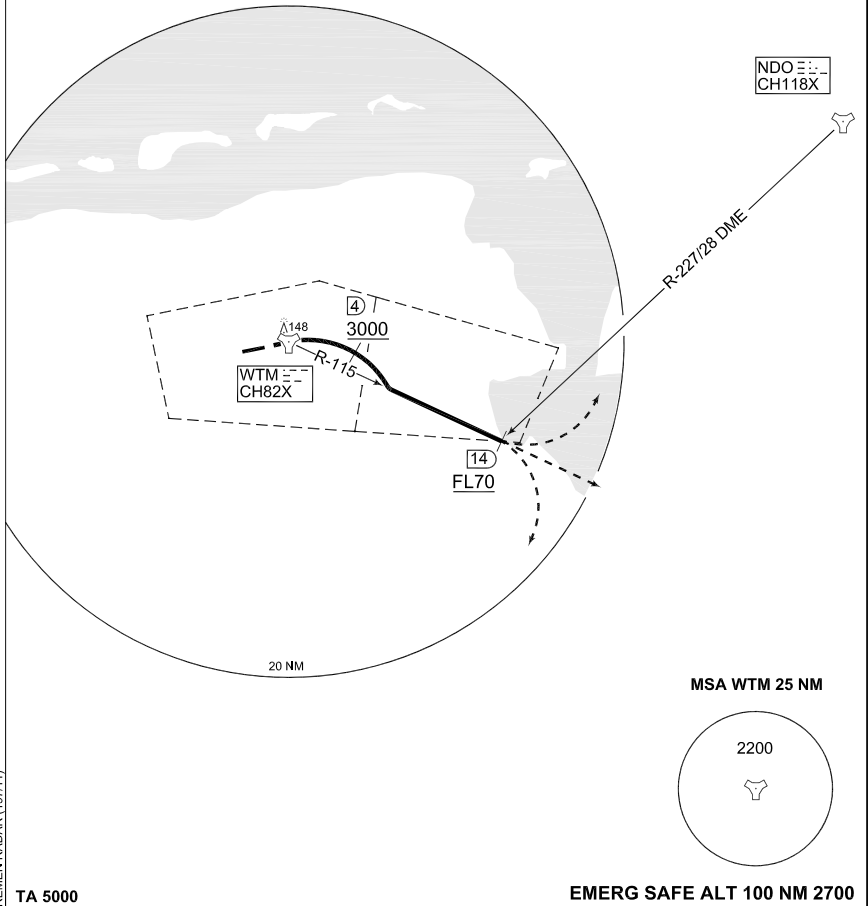
**MIPS
INSTRUMENT DEPARTURE CHART**

AD ELEV 26

**NT 208
WITTMUNDHAFEN (ETNT)**

WITTMUND TWR 386.875 118.725		WITTMUND RADAR 248.050 123.600				BREMEN RADAR 313.225 120.225			
RWY	From - To	60	120	180	240	300	360	Reason	
08	DER - 3000 ft	545	1090	1635	2180	2725	3270	ATC	
08	3000 ft - FL70	400	800	1200	1600	2000	2400	ATC	

★
0°
(2005)



CHANGE: FREQ BREMEN RADAR (197/11)

TA 5000

EMERG SAFE ALT 100 NM 2700

NT 208 (RWY 08)	<p>CLIMBOUT RESTRICTION: Pass WTM/4 DME at 3000 ft or above</p> <ul style="list-style-type: none"> - Climb straight ahead to WTM - At WTM turn right to intercept WTM R-115 - Pass WTM R-115/14 DME at FL070 or as cleared by ATC
--------------------	--

AFSBw 22 SEP 2011

NT 208

53°32.87'N
007°40.04'E

WITTMUNDHAFEN (ETNT)