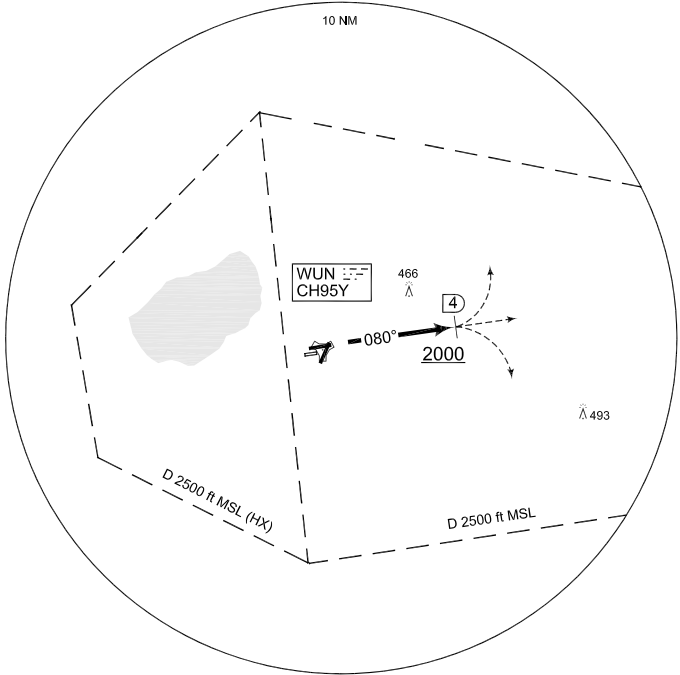


MIPS
OPERATIONAL INSTRUMENT DEPARTURE CHART

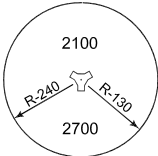
AD ELEV 187

NW 208
WUNSTORF (ETNW)

WUNSTORF TWR 282.000 138.600		WUNSTORF RADAR 389.400 142.500				BREMEN RADAR 259.725 131.325					
		RWY	Knots	60	120	180	240	300	360	to	
		08	V/V (fpm)	570	1140	1710	2280	2850	3420	2000 ft	



MSA WUN 25 NM



EMERG SAFE ALT 100 NM 6100

TA 5000

- After takeoff climb on track 080° until passing WUN/4 DME
- Pass WUN/4 DME not below 2000 ft
- Proceed as cleared by ATC

CHANGE: EDITORIAL (278/11)

AFSBw 12 JAN 2012

NW 208

52°27.44'N
009°25.63'E

WUNSTORF (ETNW)