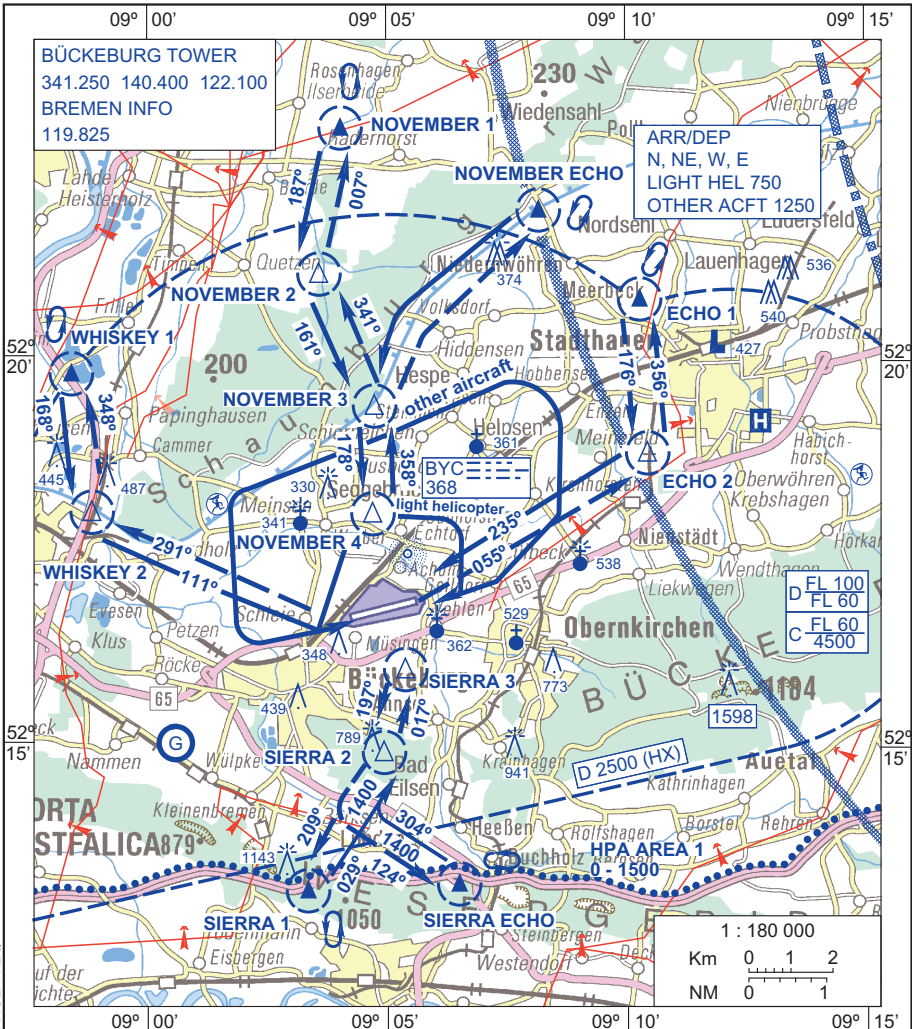


VAD

ELEV 230 VAR 1° E (2010.0)

BÜCKEBURG
ETHB



1. Arrivals via SIERRA/SIERRA ECHO are to be performed direct from SIERRA 3 to the prescribed landing area unless otherwise instructed.
Departures via SIERRA/SIERRA ECHO are to be performed from the departure area direct inbound SIERRA 3 unless otherwise instructed.
2. Radio monitoring shall be maintained 3 minutes after leaving CRP.
●●●● = Boundary HPA AREA 1 of BÜCKEBURG