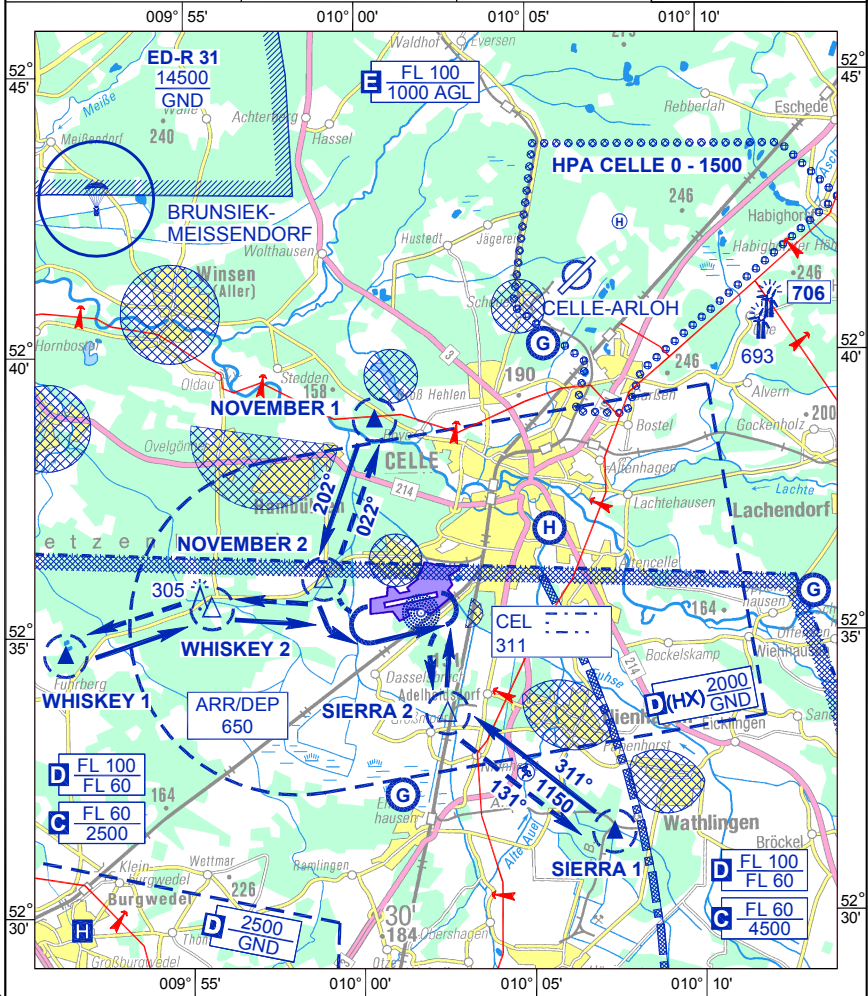


**NATIONAL
VISUAL OPERATION CHART**

**ARR/DEP RWY 08/26 - 1
CELLE (ETHC)**

AD ELEV 129	ARP 52°35.47'N 010°01.33'E	VAR 2° E (2011.0)	1 : 250 000 km 0 1 2 3 4 5 NM 0 1 2
CELLE TOWER 281.900 257.800 122.100 38.200x	BREMEN INFORMATION 119.825		



1. Avoid overflying of populated areas.
2. Avoid overflying lake "Entenfang" (0,5 NM NNE CRP NOVEMBER 1) below 1000 ft MSL.
3. Expect continuous helicopter traffic at HPA CELLE Mo - Fri dly 0700-1600++.
4. Arrivals and departures strictly exclusive via CRP's NOVEMBER, WHISKEY and SIERRA only.
5. ARR / DEP via CRP O/R SIERRA 2 west of railway only. Stay well clear of railway.

CHANGE: NEW CHART

AFSBW 30 JUN 2011

ARR/DEP RWY 08/26 - 1

CELLE (ETHC)