

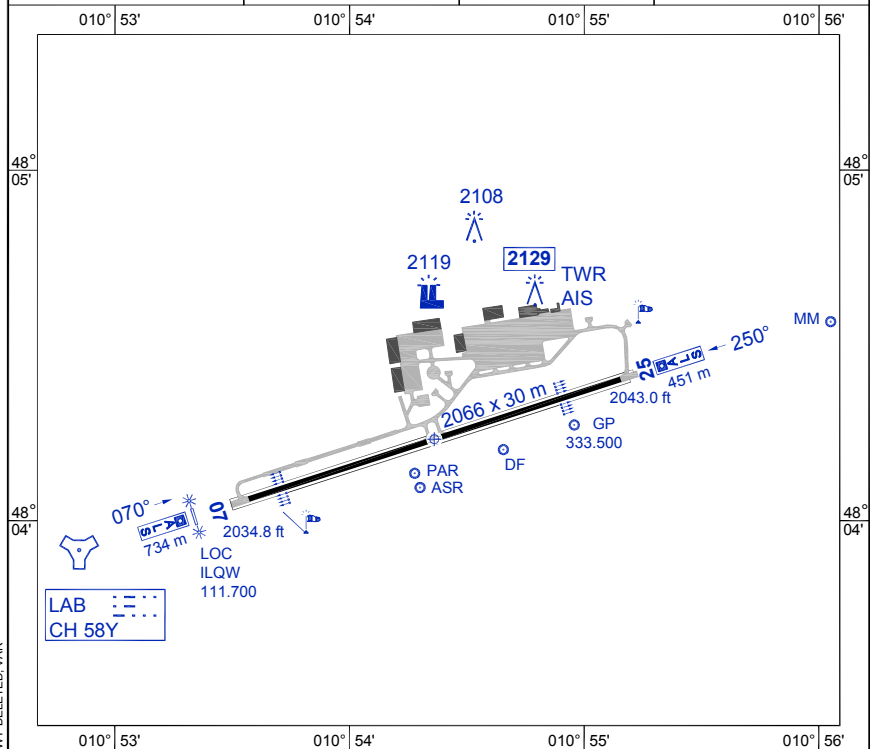
**NATIONAL  
VISUAL OPERATION CHART**

**AERODROME CHART  
LANDSBERG/LECH (ETSA)**

AD ELEV 2044	ARP 48°04.23'N 010°54.36'E	VAR 2° E (2012.0)	1 : 40 000 km 0 0.4 0.8 NM 0 0.4
LANDSBERG TOWER 315.700 257.800 140.075	MÜNCHEN INFORMATION 126.950		

**VAD JET REPORTING POINT LOCATIONS:**

REPORTING POINT	UTMREF	LAT	LONG
ENTRY EAST	32U PU 5766 2680	48° 04.50000'N	011° 07.00000'E
ENTRY WEST	32T PU 2619 1769	48° 00.00000'N	010° 41.50000'E
GOLF	32U PU 3784 2444	48° 03.50000'N	010° 51.00000'E
INITIAL07	32U PU 3333 2279	48° 02.66667'N	010° 47.33333'E
INITIAL25	32U PU 5016 2877	48° 05.66667'N	011° 01.00000'E



RWY	MAG BRG	PCN	TORA (m)	TODA (m)	ASDA (m)	LDA (m)	PAPI / VASIS	THR COORDINATES	TDZE (ft)
07	070°	LCN 73	2066	2066	2066	2066	P 3.0°	48°04.06167'N 010°53.57080'E	2034.8
25	250°	LCN 73	2066	2066	2066	2066	P 3.0°	48°04.40327'N 010°55.15262'E	2043.0

**AERODROME CHART**

**LANDSBERG/LECH (ETSA)**

CHANGE: TEXT SWY DELETED, VAR

AFSBW 08 MAR 2012