

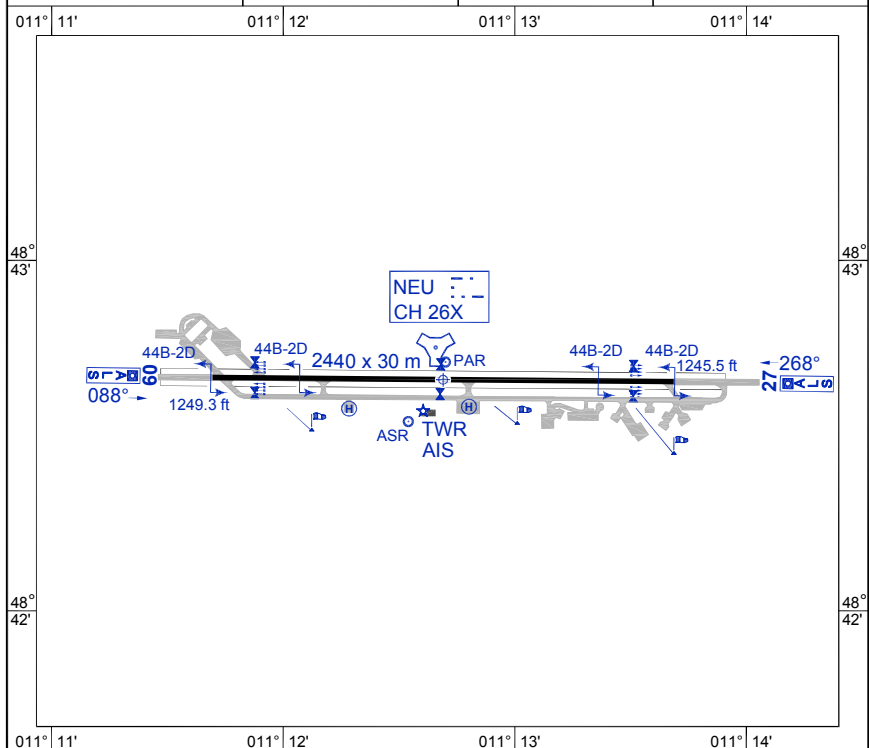
**NATIONAL  
VISUAL OPERATION CHART**

**AERODROME CHART  
NEUBURG (ETSN)**

AD ELEV 1250	ARP 48°42.66'N 011°12.69'E	VAR 2° E (2012.0)	1 : 40 000 km 0 0.4 0.8 NM 0 0.4
DONAU TOWER 369.100 257.800 129.850 122.100	MÜNCHEN INFORMATION 120.650		

**VAD JET REPORTING POINT LOCATIONS:**

REPORTING POINT	UTMREF	LAT	LONG
ENTRY NORTH 09	32U PV 4432 1874	48° 54.28663'N	010° 58.16608'E
ENTRY NORTH 27	32U PV 7154 1410	48° 51.36797'N	011° 20.31856'E
ENTRY SOUTH 09	32U PU 4002 8519	48° 36.24692'N	010° 53.96284'E
ENTRY SOUTH 27	32U PU 7435 8352	48° 34.82915'N	011° 21.83975'E
INITIAL 27	32U PU 6727 9778	48° 42.63603'N	011° 16.43024'E
WHISKEY	32U PU 5246 9746	48° 42.69120'N	011° 04.35233'E



CHANGE VAR

RWY	MAG BRG	PCN	TORA (m)	TODA (m)	ASDA (m)	LDA (m)	PAPI / VASIS	THR COORDINATES	TDZE (ft)
09	088°	LCN 92	2440	2440	2440	2440	P 3.0°	48°42.66543'N 011°11.69513'E	1249.3
27	268°	LCN 92	2440	2440	2440	2440	P 3.0°	48°42.65418'N 011°13.68510'E	1247.0

AFSBW 08 MAR 2012

**AERODROME CHART**

**NEUBURG (ETSN)**